

## EndNote for Windows, version X3

### EndNote is software that:

- Searches bibliographic databases and retrieves selected references directly into EndNote and attaches full-text articles with an additional command
- Imports downloaded references
- Stores, manages and searches for bibliographic references in your Library
- Builds a list of cited works
- Organizes images (charts, figures, and equations) and provides image captions

### System and Hardware Requirements:

- Windows XP, with Service Pack 3 installed (32 or 64 bit versions)
- Windows Vista (32 or 64 bit versions)
- Pentium 450-MHz or faster processor
- A hard drive with at least 180 MB of free space
- 256 MB of available RAM
- Internet connection required to search online databases
- EndNote files are compatible across Windows and Mac OS X platforms
- EndNote X3 is Unicode compliant

### Word processor compatibility:

EndNote X3 is compatible with:

- Microsoft Word 2003 or 2007 for Windows
- *Open Document Format (ODT) documents created with OpenOffice.org Writer*
- **RTF files** created with most word processors, including: Microsoft Word, WordPerfect, StarOffice, OpenOffice.org Writer, StarOffice and WordPad.

### Palm OS Requirements:

- Palm OS 4.x and later
- Serial/USB communication for HotSync operations
- 16MB of RAM, with at least 8 MB available

### Windows Mobile device:

- Pocket PC (does not include Smartphones)
- Windows Mobile operating system 5 or later
- Serial or USB communication for ActiveSync operations
- 16MB of RAM

### Technical Support

Call or email EndNote with a clear description of the problem and state which version you have of Windows, EndNote and word processor.

Email support request: <http://www.endnote.com/encontact.asp>

Phone: 800-336-4474; press 4, and then select the "ResearchSoft Products"

The EndNote website at <http://www.endnote.com> contains technical support tips, utilities for data transfer, and information about the latest version of EndNote. You can also find updated styles, filters, connection files, tutorials and other related documents at this site.

**It is strongly recommended that you uninstall any earlier version of EndNote before you install EndNote X3.**

**To update software:** be sure you are connected to the Internet and then go to EndNote's **Help** menu, select **EndNote Program Updates**.

## Introducing the EndNote Library

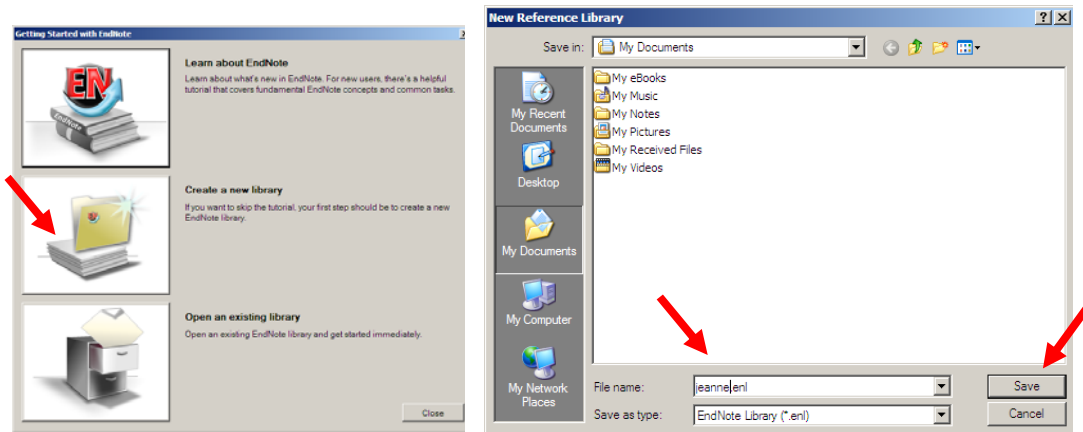
- A **Library** is a collection of references containing the author, title, journal source, keywords, notes, abstracts, etc. (**Library**=database)
- Each **Library** can contain as many references as your computer memory can accommodate
- There is no limit to the number of **Libraries** that can be created
- It is recommended that all references cited in a paper be in one main Library
- You can open more than one **Library** at a time
- EndNote Libraries created with the Macintosh versions of EndNote can be used by the Windows version of EndNote and vice versa
- If your Library includes images, they are stored in a **[library name].DATA** folder which is in the same folder as your Library. Remember to move, copy, rename, or delete the associated **.DATA** folder along with the Library.
- **Back up** your Libraries, along with any other important documents.  
Go to **File > Save a Copy** or **File > Compressed Library (enlx)**

## Open EndNote and Create a Library

Path: **Start > Programs > EndNote > EndNote Program**

### To create a new Library:

- Select **Create a new library**
- In **New Reference Library** window, type Library name in the **File name:** box.  
(A corresponding **data** folder will automatically be created.)
- Click **Save**

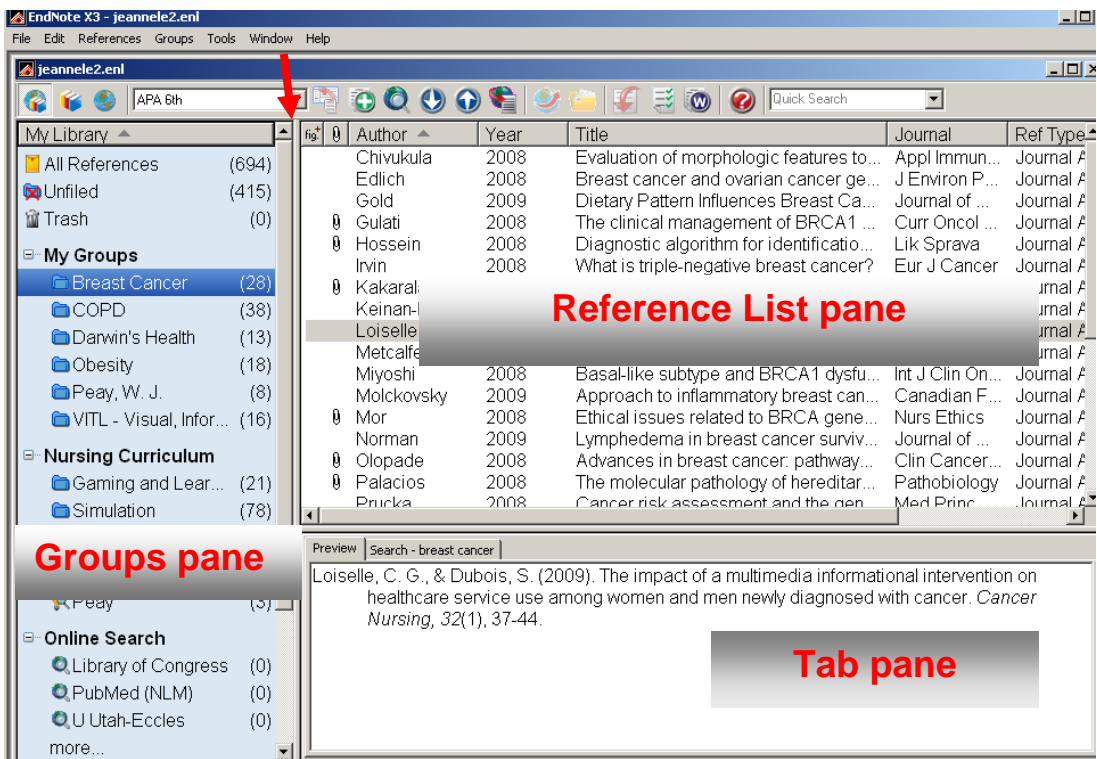


- To open a library from within EndNote – **File > Open > Open Library**

**Note:** If you want to use the journals term list(s) provided by EndNote, do so before entering any citations into the Library. See page 25 for more details.

## The Library Window

- The Library window displays groups, a multi-column list of references and tab pane.
- **The Groups pane**
  - **All References;** displays entire list of references
  - **Unfiled;** references not part of a custom group
  - **Trash;** references deleted from library, but not yet permanently eliminated
  - **My Groups;** subsets of references created by the user
  - **My Smart Groups;** groups built with search strategies
  - **Online Search;** lists frequently used online databases
  - **EndNote Web;** works with the Web version
  - **Find Full Text**
- **Reference List pane** (from left to right):
  - *fig*; heading for references that have an attached file
  - *paper clip*; references that have attached files
  - **Author, Year, Title, Journal, Ref Type, etc.**
    - Sort by clicking on a column heading
    - Use EndNote Preferences to change order of display or to select preferred headings
- Click and drag on the column dividers to resize the column.



- **Tab pane:** Highlight a reference in the Reference List pane to view more detail using the preview tab at the bottom of the Library window. Citation will display in the selected output style. Hide Tab Pane / Show Tab Pane is a toggle.
- Double click on a reference to see the complete record.

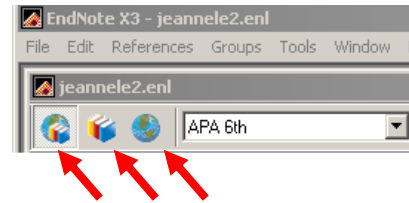
## Methods for Getting References into the EndNote Library

There are four methods for getting references into your EndNote Library. A brief description of each method follows; each method will be described in detail on the following pages.

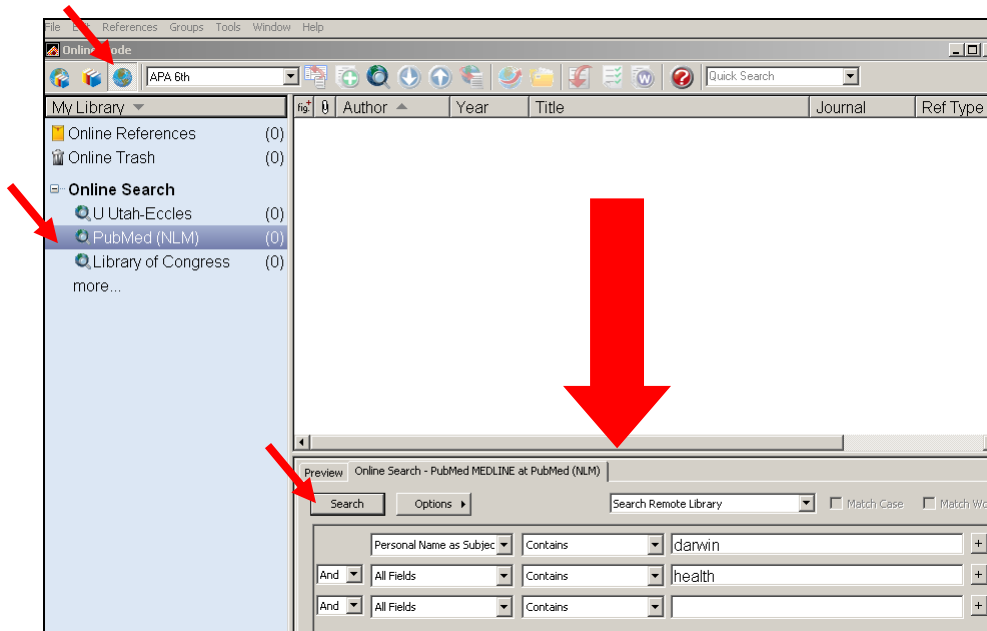
1. **Searching an Online Database from within EndNote** (integrated or temporary)  
Go to: **Tools > Online Search** then choose a connection  
OR select from your list of **Online Search** favorites in the Groups Pane
  - a. Requires a connection to the Internet
  - b. Fill in EndNote search template than press **Search** button
  - c. Depending on the Mode selected to perform the search, references are either automatically saved in the EN Library (Integrated Library) or saved in a temporary Online Library (Online Search Mode)
  - d. **This works well for PubMed and/or library catalogs (such as Library of Congress or the University of Utah Marriott Library). Export is the better choice for subscription databases.**
  
2. **Import**
  - a. Perform search in an online database (e.g. PubMed)
  - b. Save references in a tagged format (MEDLINE display format) and as a text file
  - c. Return to EndNote and use **File >Import**; fill in the dialog window and be sure to select the correct filter
  - d. This works for databases that provide a tagged format: best for PubMed if you are not at your own computer but want to save retrieval for Import later
  - e. Works for the EBSCOhost databases and Web of Science if you are not at your own computer but want to save retrieval for Import later
  
3. **Export**
  - a. This feature assumes that EndNote is installed on your computer and you are connected to the Internet
  - b. Perform search in an online database (e.g. EBSCOhost CINAHL, PsycINFO)
  - c. Select and save citations; look for **Export** or **Direct Export** button within the online database
  - d. Navigate to your Library; you may be asked to select the filter from a provided list
  - e. The advantage of Export is being able to use the native interface of the database rather than the EndNote search template. There are fewer steps and it's more efficient.
  - f. Use for all EBSCOhost databases; Scopus, Web of Science; WorldCat, etc. (Not available for PubMed!)
  
4. **Manual Input**
  - a. Use only if you do not have access to the citation in an online database
  - b. Select the correct **Reference Type** (e.g. Journal Article, Book, etc)
  - c. Fill in the appropriate fields
  - d. Click **Save**

## 1. Searching an Online Database from within EndNote

- There are 3 modes available for doing an Online Search
  - **Integrated Library**
    - Search results are saved directly to the open Library
  - **Local Library Mode**
    - Searches within your Library
  - **Online Search Mode** (Temporary Library)
    - Search results are stored in a temporary Library until you save them to a permanent EndNote Library; allows you to review and select best citations



- Select the **Online Search Mode**
- Under Online Search select **PubMed (NLM)**
  - If PubMed is not an option, click on **more . . .** then select **PubMed (NLM)** from the list of databases listed in the **Choose a Connection** window
- Enter your search terms in the Online Search template

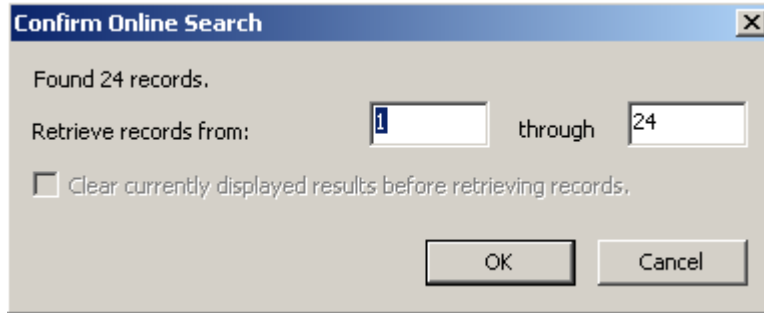


### Online Search template

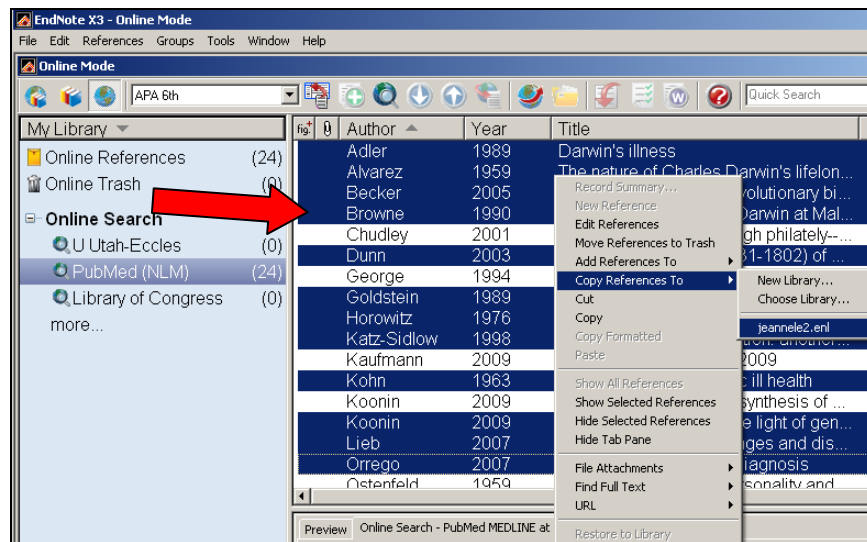
- Enter search term(s) (see example above)
- Limit term(s) to a specific field by using the **All Field** pull down menu
- Select appropriate Boolean operator (and, or, not); click **Search**
- The search example below has two criteria; add as many criteria as needed by using the **plus** buttons on the right
- Click **Search** button

### Confirm Online Search

- The search is run; the **Confirm Online Search** window indicates number of citations found in online database
- Click **OK** to continue

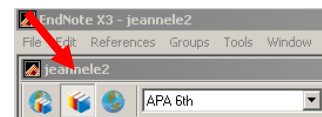


- Citations are added to an **Online Mode Library**; this allows you to review and select the citations you want for transfer to your Library.
- Double click on an individual citation to see the complete record
- Use **Ctrl + Click** to select the citations you want
- Right click and select **Copy References To** and select Library
- Citations have been integrated into your Library; return to Local Library Mode to review



### Add References to a Group

- Return to your Library by clicking on **Local Library Mode**
- From the Groups pane highlight **Copied References**
- Select all reference
- Right click > **Add References To > Create Custom Group** (or select an existing group)
- See page 8-9 for more information about Groups

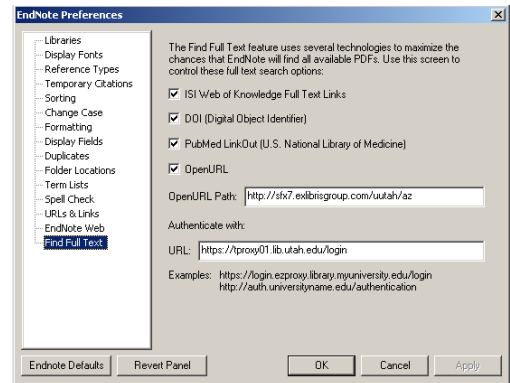


## Find Full Text and EndNote Preferences

In order for the Find Full Text to work to your advantage, you must set up the Find Full Text Preferences in EndNote.

Go to: **Edit > EndNote Preferences > Find Full Text**

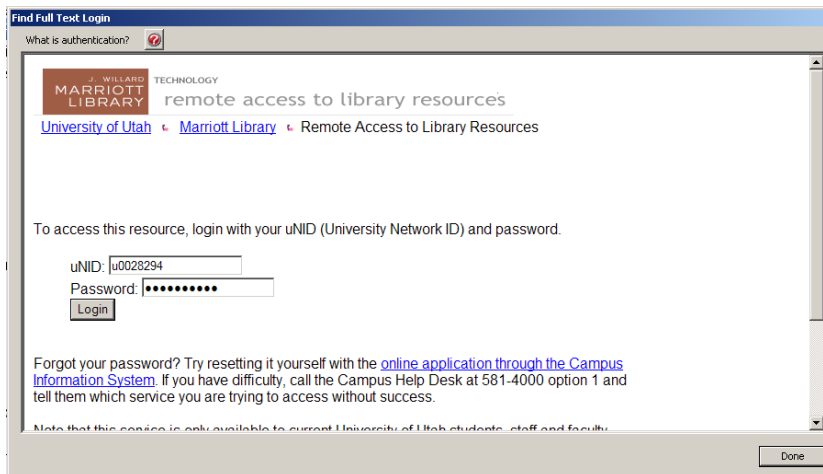
Select ISI, DOI, PubMed and add this URL to Authenticate with: <https://tproxy01.lib.utah.edu/login>  
**OpenURL** – should be <http://sfx7.exlibrisgroup.com/utah/az>



You will be asked to enter you uNID.

### Find Full Text

- Highlight the citations that were just copied to your group
- Right click **Find Full Text > Authenticate**
- Enter your University of Utah **uNID** and **password** to authenticate (for any one session, you only need to do this once)



**NOTE:** Most of the connections in the Online Search menu are library catalogs; these do not require a login and password. Some of the connections are to proprietary databases and these require a login and password. (**Export** is a better option for most databases; Export is not available for PubMed.)

## Group Sets and Custom Groups

- Use group sets to organize up to 500 custom and smart groups
- A custom group is built by adding individual references to the group
- A smart group is compiled automatically and is based on a search strategy

## Types of Groups

- **Permanent Groups** (cannot be removed or renamed)
  - *All References*
  - *Unfiled*
  - *Trash*
- **Temporary Groups** (may be replaced as you use commands in EndNote and are always deleted when you close a Library)
  - *Duplicate References*
  - *Full text*
  - *Imported References*
  - *Search Results*
- **Custom Groups** (are created by the user to help organize the Library)
- **Smart Groups** (uses search criteria to dynamically update groups as existing references are edited or new references are added to the Library)
- **Online Search** (is a list of favorite online databases and allows user to quickly initiate a connection to that online database)
- **EndNote Web** (allows user to initiate a transfer of references between an EndNote Web folder and EndNote)

## Important Points about Groups:

- There is a limit of **500 custom** groups per Library
- A reference can be added to a specific group only once
- A specific reference can be added to any number of groups
- A reference deleted from a group still exists in the Library
- Deleting a reference from the Library will also delete it from a group
- The Groups pane can be displayed or hidden using the Show/Hide Groups

## Creating a Group Set

- In the groups pane, right click on **My Groups**
- Select **Create Group Set**
- Enter the name of the Group Set
  - Custom groups can be added to the Group Set by clicking and dragging the Group to the Group Set
  - Group Sets can be expanded or collapsed by clicking on the minus or plus

## Creating a New Group

- In the groups pane, right click **My Groups**
- Select **Create Group**
- Enter the name of the Group
  - A group name can be 1-255 characters in length

## Working with Groups

To **add references** to a group

- Highlight reference(s) than go to **References > Add References to > New Group**

To **delete references** from a group

- Select the group name
- Highlight the reference(s) than go to **References > Delete References from Group**
- A reference deleted from a group remains in the main Library

To **delete a group**

- Select the group name
- Select the Delete group command (4 ways of doing this)
  1. Press the Delete key on your keyboard
  2. From the References menu, select Delete Group
  3. From the References menu, select Groups and then Delete Group
  4. Right click on group name and select Delete
- The group is deleted from the Library, but the references remain in the main Library

To **rename a group** (3 ways of doing this)

1. Right click on the group name > Rename Group > type new name
2. Double click on the group name > type new name
3. From the References menu, select Groups > Rename Groups

**Temporary Groups** (exist only while the Library is open)

- **References Searched**; each time you do a search, the group is updated (appends)
- Imported References
- **Transferred References**; works with **EndNote Web**; replaces with new set each time (overwrites)

## Using Smart Groups

Smart groups are built with search strategies. Smart groups are dynamically updated as you add references to and edit references in the library. The Smart group will be updated with matching references each time you add or save a reference to your Library.

**To create a Smart Group:**

- In the groups pane, right click on My Groups
- Select **Create Smart Group**
- Enter the Smart Group Name
- Enter search strategy
- Click **Create**

**To create a Smart Group from an Existing Search Strategy**

- Click All References
- Click the **Search** tab in the Tab Pane.
- Click **Options** and select **Load Search**.
- Locate, select, and open the search strategy to load it into the Search tab.
- Click **Options** and select **Convert to Smart Group**.
- Name the Smart Group search

## 2. Import Citations into EndNote

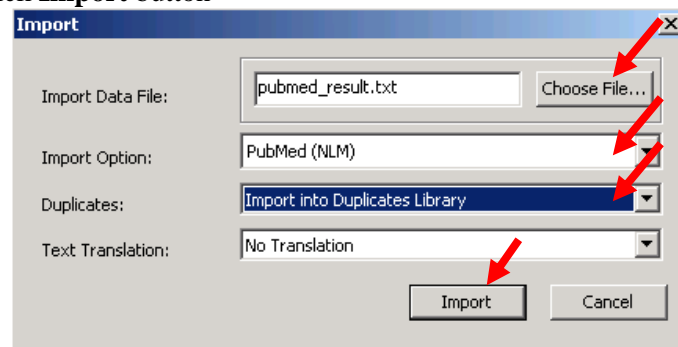
**General information:** Do a search in PubMed, EBSCOhost PsycINFO, or any other bibliographic database; save citations; then import citations into EndNote. (See page 38 for an explanation of how to save PubMed citations so that they can be imported into EndNote.)

Saved files must be **Tab-delimited** and saved as a **text file**. <filename.txt>

**Note:** Tab-delimited means that each field of the database record has a name (usually a 2-4 letter code) that directs the information to the appropriate field in the EndNote record. For example, it directs the journal article title information to the title field in EndNote.

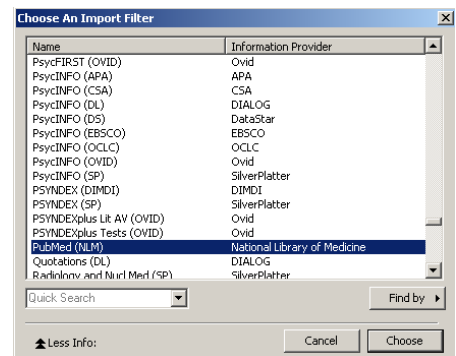
### Steps for importing citations from a saved file

1. **File > Import** (See Import window example below)
  - a. Click **Choose File** button and navigate to the saved text file
  - b. Select file and click **Open** (In the example below the file is saved as *pubmed\_result.txt*)
  - c. Use **Import Option:** pull-down menu to select the Vendor/Database used to perform the search. (In the below example *PubMed (NLM)*)
    - a. To review other choices, select **Other Filters** and browse to select (See 1ca screen shot below)
  - d. Use the **Duplicates:** option to Import All, Discard Duplicates or Import into Duplicates Library (recommended)
  - e. Click **Import** button



**NOTE:** If the above steps were completed successfully the EndNote Library will display a list of the newly **Imported References**. Double click on an individual citation to view the record. Each record includes the complete citation with abstract and keywords (if they were available in the original database). This is a perfect time to add a keyword to all of the imported citations using the **Change and Move Fields** command, or to peruse the imported data to be sure it imported as expected or create a **Group**.

This would also be a good time to **Find Full Text**. See page 7 for details.



**1ca – Choose an Import Filter**

### 3. Export

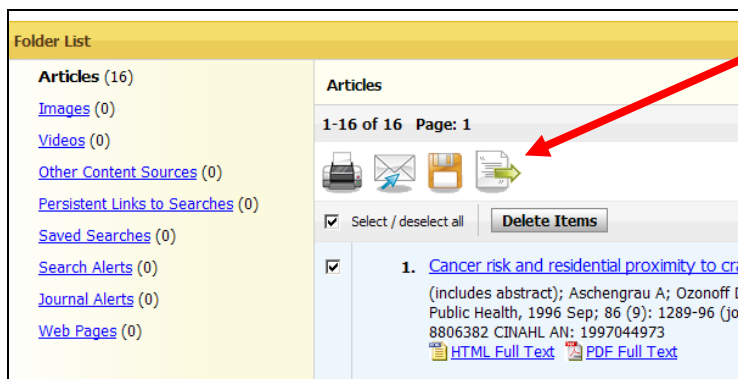
**Export** provides the benefit of using the search interface of the host database (for example EBSCOhost CINAHL) and the ease of transferring the citations directly into EndNote.

Many online databases, such as Highwire Press, Ovid, OCLC, ProQuest, Scopus, the ISI Web of Science, WorldCat, Google Scholar and more, provide the export feature.

#### **Example EBSCOhost CINAHL Export:**

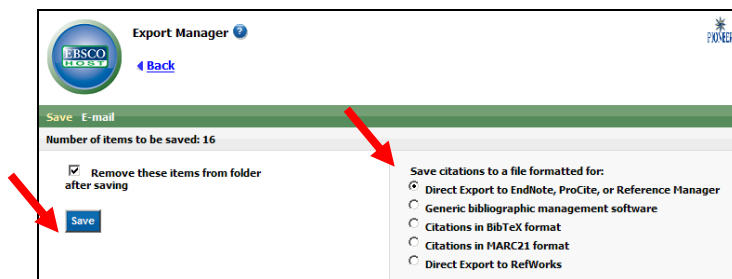
After doing search in the **EBSCOhost CINAHL** database, perform the following steps in order to export selected citations into the EndNote Library.

1. Click the **Add to folder** link to select desired citations
2. Click the **Go to: Folder View** link in the **Folder has items** task pane (to the right)
3. Check the **Select/deselect all** box to flag all citations; or select individual citations
4. Click **Export** icon



**Note:** This is the Export icon.

5. In the Export Manager - click the radio button for *Direct Export to EndNote ...* then click **Save** button



6. From the **Choose Destination** dialog box select **EndNote** and click **OK**.
7. If your EndNote Library is open, the citations populate that Library. If your Library is not open, EndNote will look for the Library. From the **Select a Reference Library** dialog box navigate to and then highlight the Library where the citations should reside. Click the **Open** button.
8. The selected citations have been Grouped in the EndNote Library in Imported References and are available for you to review and/or add notes, create a new Group or attach full text.
9. To view all reference select **All References**

#### 4. Manual Input: Entering and Editing Citations

- Path: **References > New Reference**
- Use the **Reference Type** pull-down menu to select reference type (e.g. journal article, book, book chapter, etc.)
- There are 45 reference types available (plus 3 unused types)

**NOTE:** The **Reference Type** determines how the citation is formatted in the bibliography and which fields are available in the **New Reference** window. You can change the reference type at any time, and the information already entered is retained. For example: you may have entered an **Edited Book**, but you need to change that to **Book section** to add chapter information.

#### **Enter bibliographic data into appropriate fields (e.g. author, title, journal title, abstract, keywords, etc.)**

Each piece of the bibliographic data is entered into separate fields. This allows EndNote to rearrange the parts of the citation to conform to various bibliographic formats. Be sure to *Tab* between fields. *Shift Tab* moves back one field; fields may also be selected with a mouse click.

**Enter only raw data and leave the formatting to EndNote.**

#### **Author and Editor Names:**

Enter one name per line

- Last, First Middle (works using “auto-complete” feature)
  - Mason, Jay Mark
  - Mason, J. M. (initials must have periods or a space between the letters)
  - Mason, J M
  - Stults, B.
  - de Gaulle, Charles
- First Middle Last
  - Jay M. Mason
  - Michael Lincoln
  - Charles de Gaulle
- Last, First, Title
  - Smith, John, Jr.
- If there is no author, leave the field blank

#### **Corporate Author Names:**

- Put a comma at the end of the corporate name
  - U.S. Department of Health and Human Services,
- If the corporate name includes a comma, than add a second comma
  - University of California,, Irvine

#### **Year:**

- Enter the year as four numbers; e.g. 2009
- Use **in press** or **in preparation** if item is not yet published

**Title:**

- Enter title without a period or other punctuation at the end
- Allow the title to wrap to the next line
- Capitalize the title in the same way you want it to be in your bibliographies
  - **Sentence style:** The cat in the hat does not come back
  - **Title style:** The Cat in the Hat Does Not Come Back

**Journal Abbreviation ... Alternate Journal Name**

- Enter the full journal name – for example: *New England Journal of Medicine*
- Enter journal abbreviations with periods and spaces – for example: N. Engl. J. Med.
  - You can edit an output style to remove periods from the abbreviation
- Use the Journals Database in PubMed to verify full and abbreviated journal titles
- Alternative Journal Name is useful when importing or retrieving references from an online source that provides two forms of each journal name (full and abbreviated) –seen in the CINAHL database.

**NOTE:** The journal title that is entered into the **Journal** field in the EndNote New Reference template is the default journal name when creating the bibliography. For example: Journal names imported from PubMed are abbreviated in the **Journal** field. Journal names imported/exported from CINAHL display the full journal name in the **Journal** field. See page 32 for a detailed explanation about how to work with the **Journal Term List** and edit output style to allow for full or abbreviated journal names.

**Volume**

- For journals, enter the volume number

**Issue**

- For issues, enter the issue number

**Page**

- Do not use commas in the **Page** field for page numbers in the thousands.  
1792  
4834
- Pages can be ranged  
142-149  
142-9  
1102-1134

**Edition**

- Enter 1<sup>st</sup> or 2<sup>nd</sup> or 3<sup>rd</sup>, etc. for this field

**Date**

- Enter dates as you want them to appear in the bibliography. EndNote does not reformat dates.

**DOI**

- A DOI (Digital Object Identifier) is a unique ID for locating a digital version of a document, PDF or figure. Useful when importing reference data from an online source.

## Label

- Used for special or unusual in-text citations
- Can be used as a number to identify the reprint

## Keywords

- Use keywords associated with reference – for example you may choose to use MeSH (Medical subject headings) or CINAHL Headings
- Keywords can be used to retrieve references using the Search command from the References menu

## Notes and Abstracts

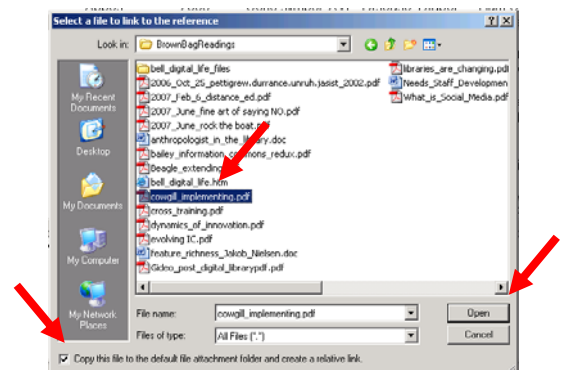
- Can hold up to 64K (16 pages of plain text)
- Use to store personal reminders, quotes, etc.
- Brief description of the contents of work

## URL (Uniform Resource Locator)

- Type or paste a Web address in this field; or type a path and file name in this field
- For example, this could link to the URL for a full text journal article for the specific citation. If the resource was paid for by the University of Utah, you would need to be connected to a University server in order to access the article.
- To activate the link, with the citation selected, go to **References > URL > Open URL**. This will open the Web browser, taking you to the Web address. OR you could open the reference, scroll to URL and then click on the URL.
- Adding any other information along with the URL **may** keep the **Open Link** command from successfully finding the linked Web address; if you do not plan to use Open Link, you can have a number of URLs in this field, each starting on a new line.

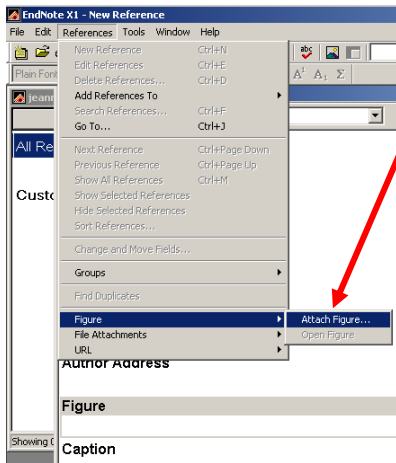
## Manual File Attachments

- Path: **References > File Attachments > Attach File**
- Using the **Select a file to link to the reference** dialog box, navigate to and select the file and click **Open**
- **Note** the check box along the bottom titled **Copy this file to the default file attachment folder and create a relative link**. Selecting this will place a copy of the file in the DATA\PDF folder; deselect the check box to have EndNote look in the original file location
- A thumbnail representing the file is added to the **File Attachment** field
- Files that can be inserted into the File Attachments field include:
  - Audio files (WAV, MP3)
  - Microsoft Access, Excel, PowerPoint, Project, Visio, Word files
  - Multimedia files (MOV, QuickTime)
  - PDF files
  - Technical drawing files
  - Text files (.txt; .rtf; html)
  - BMP, GIF, PNG, JPEG, TIFF
- The file attachments field can hold up to **45 files**.



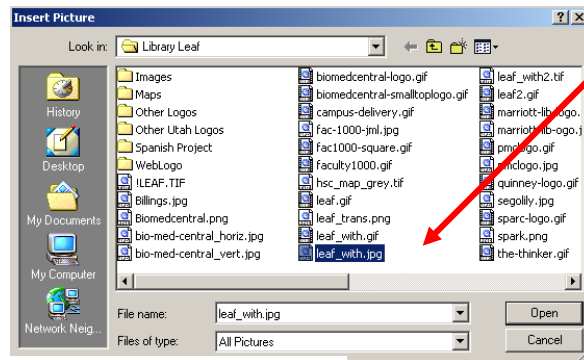
## Figure with Caption

- Use to attach a graphic or file you want to insert into a word document.
- Each EndNote reference can contain only one figure attachment. If you insert a second file, it will replace the first one and the previous image is deleted from the **.DATA** folder
- **Note** the check box along the bottom titled **Copy this file to the default file attachment folder and create a relative link**. Selecting this will place a copy of the file in the DATA\PDF folder; deselect the check box to have EndNote look in the original file location
- Caption field is used for a short description of the figure



## Process for Inserting a Figure and Caption

- With Figure field selected, select **References > Figure > Attach Figure**
- Navigate to the file and double click on the file
- The figure is inserted in the **Figure** field
- Double-clicking on the thumbnail will open the associated application to open the graphic
- The file will be available for use in paper
- Acceptable file types: BMP, GIF, JPEG, PNG, TIFF



## Reference Type: Figure, Chart or Table

These reference types can be used to catalog pictures, files and object files, and may contain minimal reference information.

**To save and close the record you are working on:**

- References are automatically saved when they are closed OR use **CTRL+W**
- You can use **File > Save** or the **Save** icon
- **CTRL+N** brings up a new template
- Each reference added to a Library is automatically assigned a unique record number that never changes for that reference in that specific Library
- Each field in a reference can accommodate 64K or approximately 16 pages of plain text

**Unicode**

EndNote uses Unicode to encode special characters, so that data is easily translated between platforms, programs, and languages. To view most Unicode characters, change the EndNote display fonts to a Unicode font, such as Arial Unicode MS.

**Path: Edit > Preferences > Change Font**

If the foreign language fonts (Japanese, Chinese, etc.) do not display properly, you may need to add a **Language pack** to your operating system.

## Sample of a New Reference template with data entered for a Journal Article

Katz-Sidlow, 1998 #11

Reference Type: Journal Article Show Empty Fields

Plain Font Plain Size B I U P A<sup>1</sup> A<sub>1</sub> Σ

**Author**  
Katz-Sidlow, R. J.

**Year**  
1998

**Title**  
In the Darwin family tradition: another look at Charles Darwin's ill health

**Journal**  
J R Soc Med

**Volume**  
91

**Issue**  
9

**Pages**  
484-8

**Epub Date**  
1998/12/16

**Date**  
Sep

**ISSN**  
0141-0768 (Print)

**Accession Number**  
9849520



**Keywords**

Biology/\*history  
Chronic Disease  
Correspondence/history  
Evolution  
\*Famous Persons  
\*Father-Child Relations  
Gastrointestinal Diseases/\*history  
Great Britain  
History, 19th Century  
Humans  
Physician-Patient Relations  
Somatoform Disorders/\*history

**Notes**  
Katz-Sidlow, R J  
Biography  
Historical Article  
Research Support, Non-U.S. Gov't  
England  
Journal of the Royal Society of Medicine  
J R Soc Med. 1998 Sep;91(9):484-8.

**URL**  
[http://www.ncbi.nlm.nih.gov/entrez/query.fcgi?cmd=Retrieve&db=PubMed&dopt=Citation&list\\_uids=9849520](http://www.ncbi.nlm.nih.gov/entrez/query.fcgi?cmd=Retrieve&db=PubMed&dopt=Citation&list_uids=9849520)

**File Attachments**

In this example, the pdf copy of the full text journal article was inserted into the **File Attachments** field.

Inserting files into the File Attachments field is the best strategy for saving the link to the file. EndNote makes a copy of this file and saves it into the Library's **data** folder.

## Sample of a New Reference template with data entered for a Book

McKibbon, 1999 #80

Reference Type: Book Show Empty Fields

Plain Font Plain Size B I U P A<sup>1</sup> A<sub>1</sub> Σ

**Author**  
McKibbon, Ann  
Eady, Angela  
Marks, Susan

**Year**  
1999

**Title**  
PDQ evidence-based principles and practice

**Series Title**  
PDQ series;

**City**  
Hamilton, Ont.

**Publisher**  
London

**Number of Pages**  
xii, 212 p.

**ISBN**  
ISBN: 1550091182; 9781550091182

**Accession Number**  
OCLC: 51363984

**Keywords**  
MEDLINE.  
Medicine -- Bibliography -- Methodology.  
Medicine -- Databases  
MEDLINE.  
Databases, Bibliographic.  
Medicine -- Bibliography.  
Evidence-Based Medicine -- methods.

**Notes**  
B.C. Decker, Inc.  
ill. ; 22 cm. + 1 computer optical disc.  
Includes bibliographical references and index.  
System requirements for the accompanying computer disc: IBM PC or compatible; Windows;  
or Macintosh computer.  
Pretty Darned Quick evidence-based principles and practice.; Evidence-based principles and  
practice.  
Ann McKibbon ; with Angela Eady and Susan Marks.  
Book

**Name of Database**  
WorldCat PDQ evidence-based principles and practice / Ann McKibbon; Angela Eady; Susan  
Marks 1999 English Book xii, 212 p. : ill. ; 22 cm. + 1 computer optical disc. Hamilton, Ont. ;  
London : B.C. Decker, Inc., ; ISBN: 1550091182 9781550091182

## Additional Notes

EndNote provides **45 reference types**:

Aggregated Database	Generic
Ancient Text	Government Document
Artwork	Grant
Audiovisual Material	Hearing
Bill	Journal Article
Blog	Legal Rule or Regulation
Book	Magazine Article
Book Section	Manuscript
Case	Map
Catalog	Newspaper Article
<b>Chart or Table</b>	Online Database
Classical Work	Online Multimedia
Computer Program	Pamphlet
Conference Paper	Patent
Conference Proceeding	Personal Communication
Dictionary	Report
Edited Book	Serial
Electronic Article	Standard
Electronic Book	Statue
Encyclopedia	Thesis
<b>Equation</b>	Unpublished Work
<b>Figure</b>	Web Page
Film or Broadcast	

**Or, you can create your own new reference types.**

## Keyboard Commands

Key Command Function

<i>CTRL + N</i>	creates a new reference
<i>CTRL + Click</i>	to select more than one reference
<i>SHIFT + Click</i>	to select a range of references
<i>CTRL + E</i>	opens selected references
<i>CTRL + W</i>	closes the active window
<i>CTRL + T</i>	sets the Style to Plain
<i>CTRL + L</i>	selects the Plain font
<i>CTRL + B</i>	turns <b>bold</b> on and off
<i>CTRL + I</i>	turns <i>italic</i> on and off
<i>CTRL + U</i>	turns <u>underline</u> on and off
<i>CTRL + +</i>	turns <sup>superscript</sup> on and off (use the numeric keypad plus)
Command +- <i>Tab</i>	turns <sub>subscript</sub> on and off (use the numeric keypad minus)
<i>Shift-Tab</i>	selects the next field
	returns to the previous field

## Entering Special Characters

EndNote references can include special characters, including characters with diacritics and Greek, mathematical and typographical symbols. Diacritical characters are a part of standard Windows fonts, thus most symbols can be entered in the Symbol font.

EndNote uses Unicode to encode special characters, so that data can be easily translated between platforms, programs and languages.

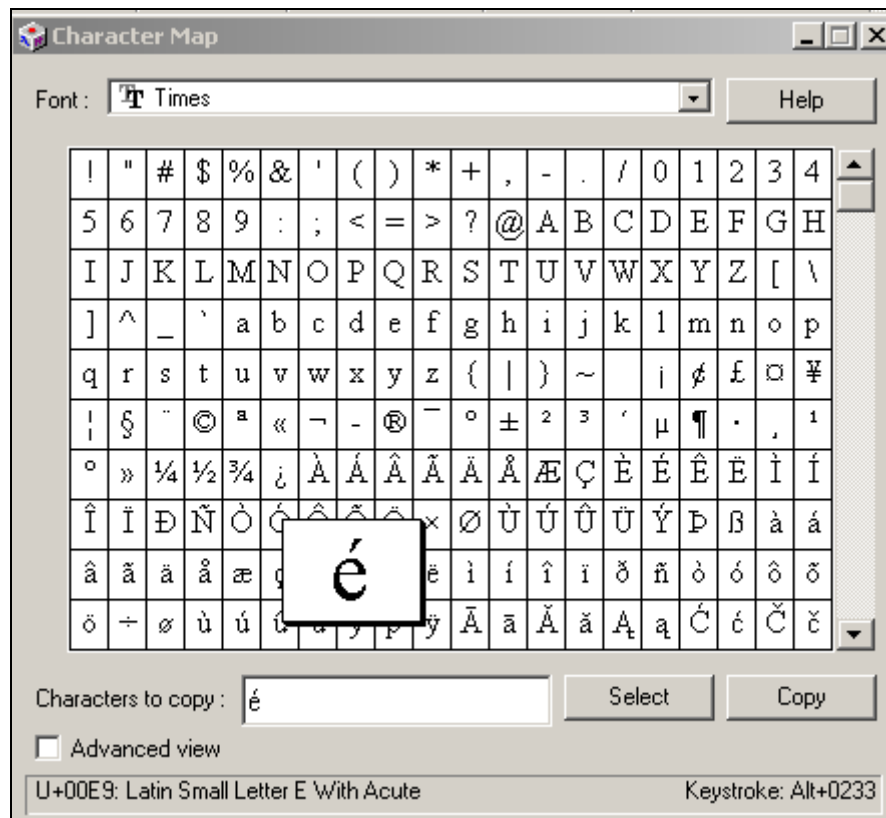
EndNote uses the default language setting set by your operating system. If the characters you wish to use require installing a different language pack see **Displaying Extended/Special Characters** in the online user manual. (Use the Help within EndNote or the PDF User's Guide from the EndNote website: <http://www.endnote.com/support/helpdocs/EndNoteX3WinManual.pdf>)

## Using the Character Map

The Character Map is located from the Start menu:

Path: **Start > Accessories > System Tools > Character Map**

- When the Character Map displays, select the font that works for the character you need.
- Then highlight the character and click the **Copy** button.
- Return to EndNote and from the **Edit** menu select **Paste**.



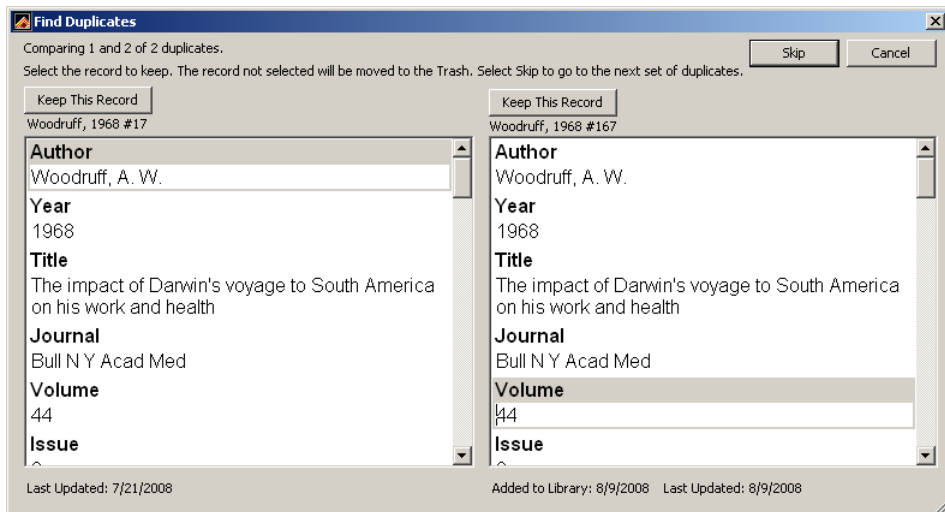
## Finding Duplicate References in Your Library

The Find Duplicates command searches the references that are currently showing in the Library window to identify duplicates. Duplicates are determined based on the duplicate criteria specified in preferences.

### To find all of the duplicate references in a library:

1. In the Group pane, click on the **All References**
2. From the **References** menu, choose **Find Duplicates**.
  - EndNote displays a Find Duplicates window, where you can compare duplicates and decide which version to keep and which to delete
3. For each set of duplicates, you have the option to:
  - Click **Keep This Record** to save that particular reference and throw the other one in the Trash.
  - Click **Skip** to leave both references in the library, intact. They will appear in a temporary Duplicate References group, so you can review them later.
  - Click **Cancel** to stop the Duplicate References operation. All duplicates will appear in the temporary Duplicate References group if you wish to review them.

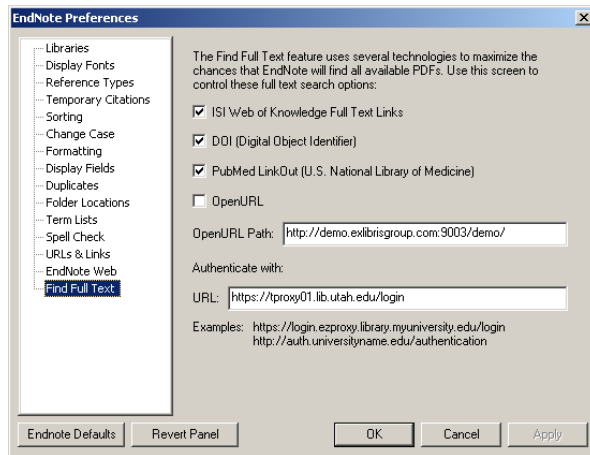
**NOTE:** The older (first entered) reference will always appear in the left column. Be sure to carefully review the citations; check the record numbers to be sure you are not deleting a reference cited in a paper.



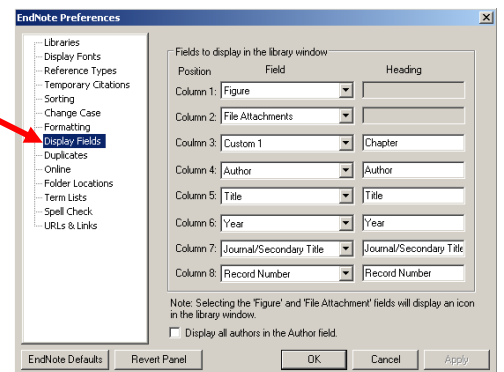
## EndNote Preferences

EndNote Preferences can be used to set default features.

Path: **Edit > Preferences**



- **Libraries:** allows you to select the specific Library or libraries that will open when EndNote starts
- **Display Fonts:** allows you to select the font and size of the text displayed in the Library window
- **Reference Types:** Modify Reference Types to add, delete or rename field names
- **Temporary Citations:** allows you to set the defaults for in-text citations
- **Sorting:** allows you to create a list of words to be ignored when sorting references
- **Change Case:** allows you to create a list of terms where case matters: “Do not change the case of the following terms”
- **Formatting:** allows you to select or deselect 3 formatting options:
  - Suggest formatting with EndNote’s Cite While You Write / Add in if the document type is supported
  - Omit Author and/or Year from formatted citations if removed from temporary citation
  - Merge duplicates in bibliography
- **Display Fields:** allows you to select the 8 specific fields you want displayed in the list of citations
- **Duplicates:** allows you to set the parameters to “Compare references based on the following fields”
- **Folder Locations:** allows you to set folder locations
  - This is particularly helpful if you did not uninstall the older version of EndNote before installing the newer version
- **Term Lists:** allows you to select or deselect options
  - Suggest term as you type
  - Update lists when importing or pasting references
  - Update lists during data entry
- **Spell Check:** allows you to select spell check preferences
- **URLs & Links:** allows you to OpenURL settings and default settings for attaching files.
- **EndNote Web:** saves subscription details for connecting to EndNote Web
- **Find Full Text:** enter your library’s URL to authenticate with ...

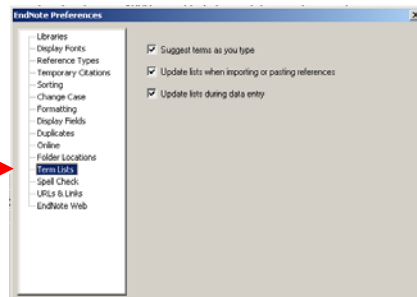


## Term Lists

EndNote's term lists are used to store **keywords**, **author** names, or **journal** names.

With the default term list settings in **Edit > Preferences > Term Lists**, all of the updating of terms and auto-completion happens automatically. If you do not want the program to automatically update the term lists, you can turn these settings off.

**Term lists are automatically maintained.** As you enter new references into your Library (whether by typing, importing or pasting) EndNote updates the lists automatically so that the Authors, Journals and Keywords lists include all of the author names, journal names and keywords entered into your references.



### Term List Facts:

- Term Lists are specific to a Library
- A Library must be open before you can edit its Term List
- Can be used for manual data entry
- Can be used to choose your search terms
- No limit to the number of terms in a Term List
- A term can be up to 253 characters long
- Up to 31 Term Lists can be created for any one Library
- **Lists are automatically updated from the terms entered in your references**
- The **Journals Term List** stores various forms of journal names that can be used when creating bibliographies. EndNote provides 12 Journals term lists (for example: Chemical, Economics, Humanities, Law, Medical and more) that can be imported for use with your EndNote libraries. (See page 25 for details.)

### Opening Term Lists

- Path: **Tools > Open Term Lists >**
- Select **Journals, Authors, or Keywords Term List**
- At this point you can add, delete or edit terms; or select a term to use in your references

### Adding Terms to a Term List

Terms can be added to the term lists using a variety of methods. Adding terms to a Term List does not change any data that you have entered in your references.

#### 1. Manually

- Path: **Tools > Open Term Lists > Authors Term List (Journals or Keywords) > New Term (CTRL+N)**
- Enter the term and click **OK**; the term is added to list and the window closed.
- Click **Save Term (CTRL+S)** to add term and keep the window opened

#### 2. Copying Terms between lists

You can copy terms from one list and paste them into another as a way to quickly transfer terms between lists. This is useful because term lists are specific to an individual Library.

- Path: **Tools > Open Term List > Authors Term List (Journals, Keywords) >**
- Select the terms to copy by clicking on them
- With the terms selected; from the **Edit** menu choose **Copy (CTRL+C)**
- Open the term list into which you want to paste the copied term list; from the **Edit** menu choose **Paste (CTRL+V)**

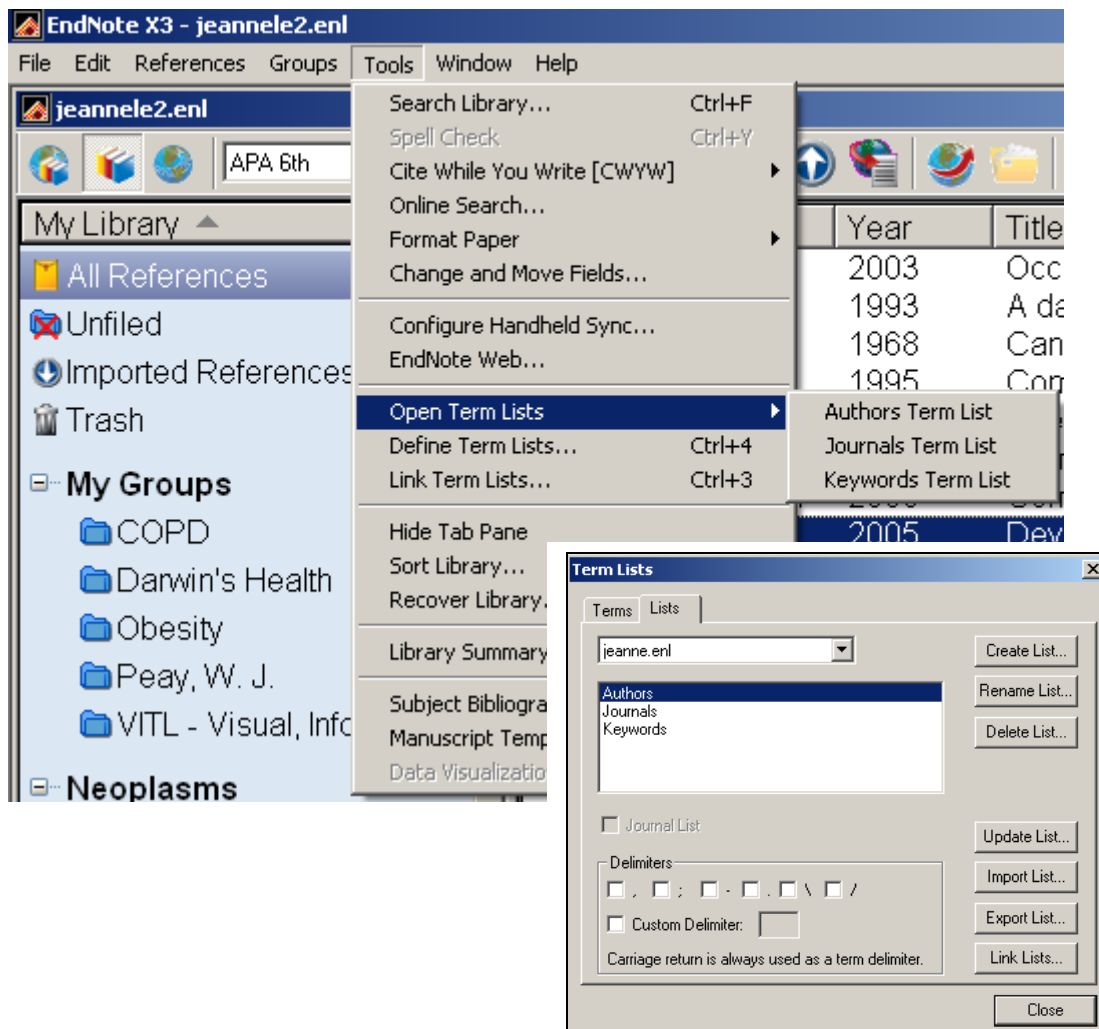
### 3. Copying Terms from Other Sources

You can copy terms from any text, and paste them directly into a term list. The terms must be separated by a carriage return. One term per line!

### 4. Manually Updating Term Lists

To create a term list automatically from words already in your Library, use the **Update List** command from the **Terms** menu. This is useful if you have turned off the preference to automatically update your term lists, or if you have received a Library from a colleague without a term list, or if you have deleted a term list and wish to recreate it.

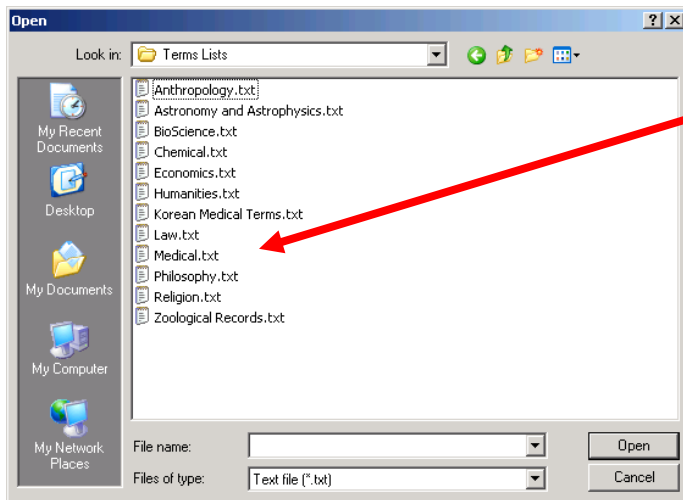
- Determine which references should be scanned for terms and make sure they are showing or selected in the Library window.
- Path: **Tools > Open Term Lists > Authors Term List (Journals, Keywords) > Lists > Update List**



## Importing Terms Into Term Lists

EndNote provides 12 lists of journal names and abbreviations (chemical, medicine and humanities, etc.). These terms are stored in the **Terms** folder in the EndNote program folder.

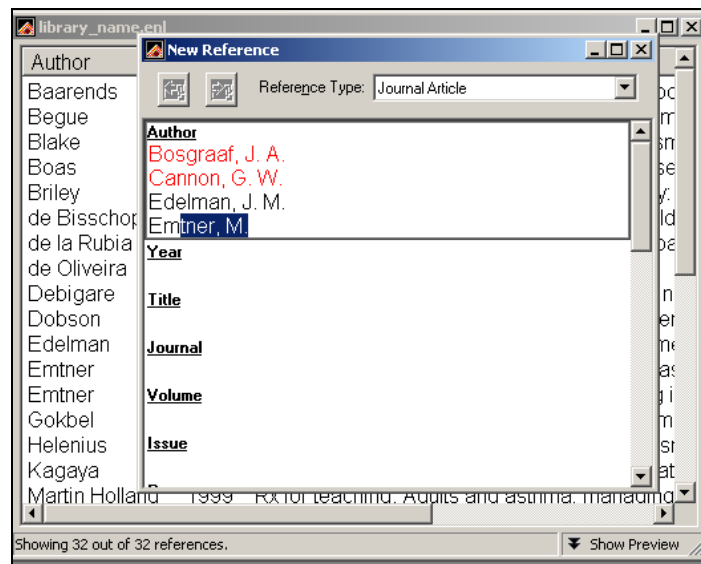
If you use **PubMed** to do your literature searches you can import the **medical** journal list file into your Library's Journals Term List. Path is -- **Tools > Open Term List > Journals > Lists (tab) > Import List >** (navigate to the folder and find. . . ) **Medical.txt**



**NOTE: The medical file is located in the Program Files EndNote X3 Term Lists Medical.txt**

## Use Term Lists for Data Entry and Searching

You can use term lists to enter terms directly into a reference or into the Search window. Terms can be entered using **“Suggest Terms As You Type”** feature; type the term until EndNote suggests the right term and then press Enter or Tab to accept it.



## Managing References

### Selecting References

#### To select a specific reference

- Click on the reference in the Library window
- Type the first few letters of the author's last name

#### To select multiple references

- Select multiple references by holding down the **CTRL** key while clicking on the references
- Select a range of references by holding down the Shift key and clicking down the page
- From the **File** menu, choose Select All

### Opening, Closing, Saving and Deleting References

#### Opening a reference

- Double-click on the selected reference

#### Closing and Saving a Reference

- Click on the close box; a dialog box will ask you to confirm changes if any were made
- From the **File** menu choose **Close Reference** or **CTRL+W**

#### Deleting a Reference

- Drag the selected references and drop them on the Trash group
- From the Reference menu, choose **Move References to Trash** or **CTRL+D**.
- From the Edit menu, choose **Cut** or **CTRL+X**, which also stores the references on the Clipboard
- From the Edit menu, choose **Clear**
- **When ready to make the final delete** – from the **References** menu choose **Empty Trash**. You **CANNOT** undo the Empty Trash command.

### Cut, Copy and Paste

You can move text from one field in a reference to different field in the reference. From the **File** menu, select **Cut** or **Copy** and then **Paste**.

You can also **Copy** and **Paste** text from a field in an EndNote reference to your word processor, and you can **Copy** and **Paste** text from your word processor to EndNote.

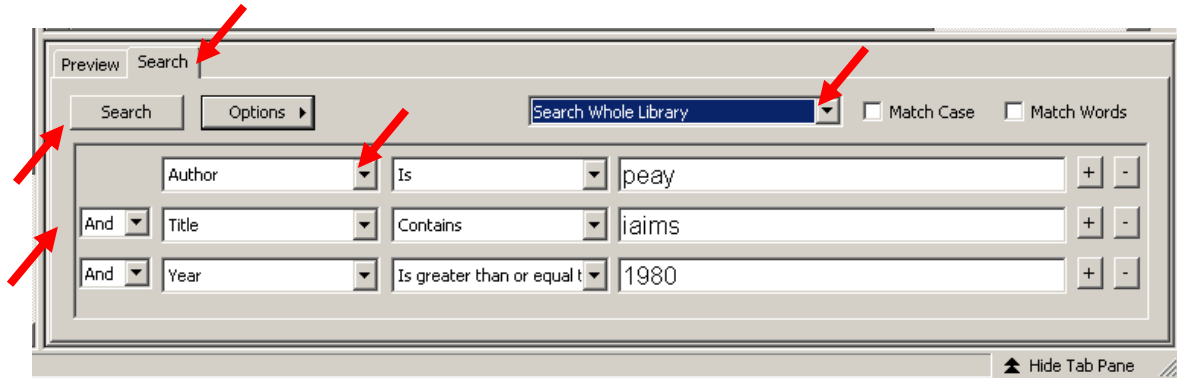
Many EndNote commands (such as Search, Change Field, Change Text, Sort, Print and Export) can be instructed to work with just those references that are showing in the Library window. Here are a few examples of operations that you can do with the showing references.

- Restrict the **Search** command to search on the showing references
- Add the results of a new search to the currently showing references as a way to combine search results
- Use the **Change Text** and **Change Field** and **Move Field** commands to modify only the showing references
- Use the term list's **Update List ...** command to scan only the showing references for new terms
- **Print** or **Export** just the showing references
- The **Show Selected** and **Hide Selected** commands provide a convenient way for you to control which references are showing in the Library window

## Searching for References

To initiate a search of your EndNote Library:

- From the Tab Pane at the bottom of the screen select the **Search** tab
- From the Groups Pane select **All References**
- Fill in the Search template using the pull down menus to select specific limits (sample search below) and the Boolean operators
- Use the Options button to Save or Load a search
- Use the plus and minus buttons to add or subtract text boxes
- Use the Search Whole Library pull down menu for additional options
- Click **Search** button



Example of a search for **Peay** as the author, **IAIMS** in the article title and publication year greater than **1990**.

## Save a Search

- Enter search terms
- Click the **Options** button and select **Save Search**.
- A dialog appears, prompting you to name the search strategy.
- Click Save (searches are saved by default in the EndNote\Searches folder)

## Load a saved search

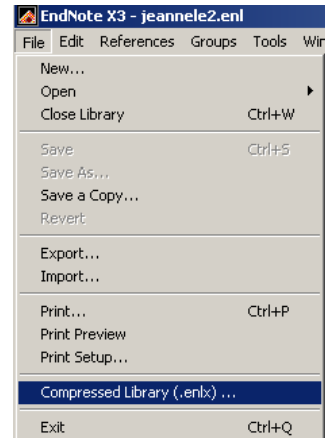
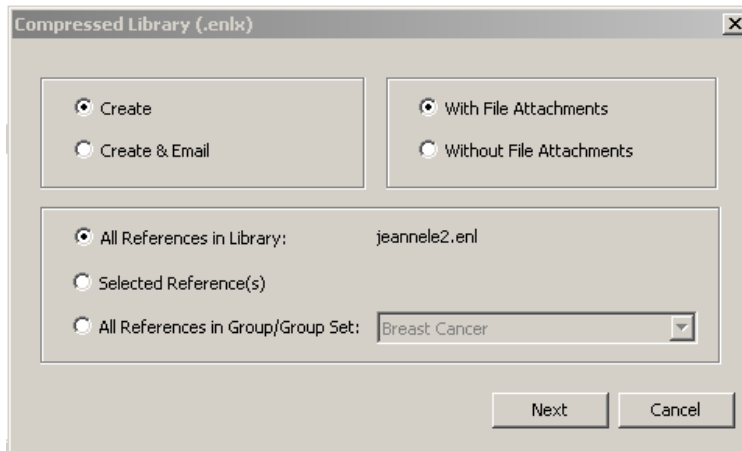
- On the Search tab, click the **Options** button and select **Load Search**.
- Select the search strategy you want to use
- Click **Open**.
- Click **Search** to initiate the search.

## Save and Share an EndNote Library

Use the **Compressed Library** feature to save and share an EndNote Library. Both the EndNote Library and Data folder will be compressed to one file with the extension **.enlx**. This file can be sent to colleagues, and saved to their computer; doubling clicking in the enlx file opens both the Library and data folder. (e.g. **library\_name.enlx**)

Process: File > Compressed Library (.enlx)...

From the Compressed Library (.enlx) window make selections:



In the Save Compressed Library (.enlx) window provide File name and navigate to the Desktop, My Documents or appropriate folder.

## Sharing Libraries

(to be added)



## EndNote X3 CWYW Tools



1. **Go to EndNote:** brings EndNote to the front of your screen.
2. **Find Citation(s):** allows you to search for EndNote references to select and insert as citations into your Word document.
3. **Format Bibliography:** formats or reformats your paper according to the rules of the selected style. The formatting process replaces the temporary citations in your paper with formatted citations and builds a bibliography at the end of the document.

**In EndNote,** select the citation format you need by following the path: **File > Output Styles > Open Style Manger;** click in the boxes for the styles you are most likely to use.

**In MS Word,** select **Format Bibliography** (#3 icon above) and from the dialog box select the output style from the **With output style** pull down menu.

4. **Insert Selected Citation(s):** inserts citations at the cursor location in your Word document
5. **Edit Citation(s):** use to edit existing citations.
6. **Insert Note:** use to add a custom text citation(s)
7. **Edit Library Reference(s):** use to directly edit a reference in Word
8. **Unformat Citation(s):** removes a output style and leaves temporary citations
9. **Remove Field Codes:** use to save a copy of document without formatted CWYW field codes
10. **Export Traveling Library**
11. **Find Figure(s)**
12. **Generate Figure List**
13. **Cite While You Write Preferences:**
14. **Help**

**NOTE:** If the EndNote toolbar does not display:

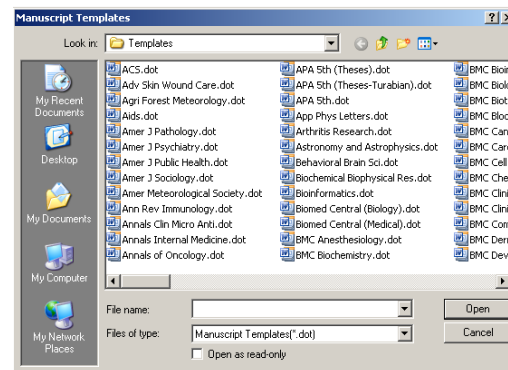
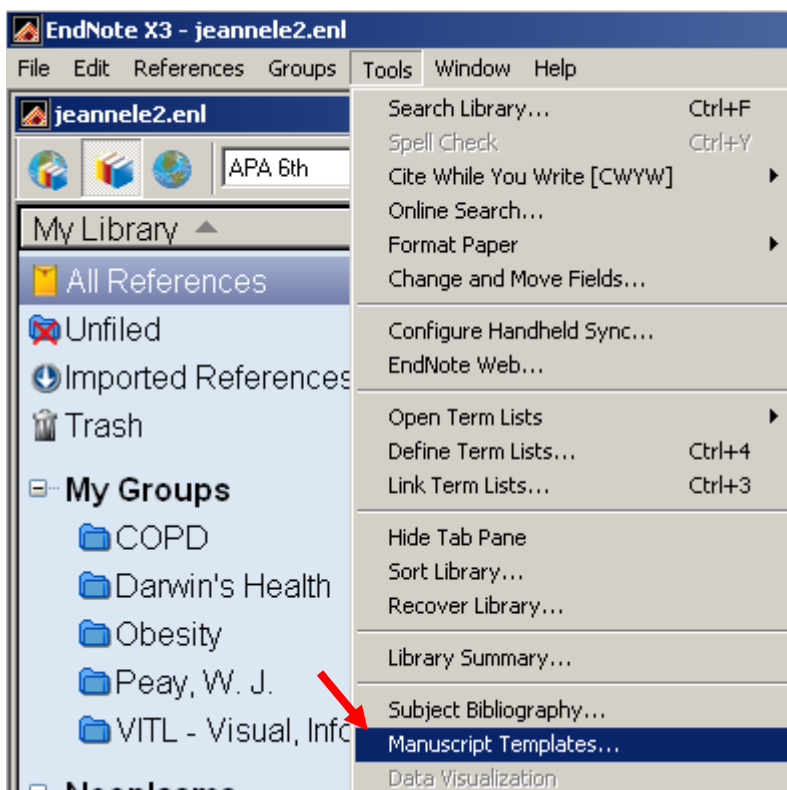
1. In Word check **View > Toolbars** and select from list
2. If the EN toolbar is not available there, then go to **Start > Programs > Configure EndNote** and walk through the EndNote Configuration wizard.
3. If all else fails, you can reinstall EndNote using **Modify** choice.

## Predefined Manuscript Templates for Publishing

EndNote has a template wizard to create Word documents. These predefined manuscript templates are supplied to ease electronic submissions to publishers. They are provided as guides to make the writing process easier. They are not required in order to use Cite While You Write. When you use one of these templates many formatting issues are already set up for your target publication, such as proper margins, headings, pagination, line spacing, title page, abstract page, graphics placement, and font type and size. As with bibliographic formats, there are hundreds of variations between publishers.

Path: **Tools > Manuscript Templates > Click to select**

There is an extensive list of templates provided. Select the one you are interested in and double click to open.



## Editing APA style to Include Full Journal Names

This is a two step process:

1. Edit the journal names in the **Journals Term List**
2. Edit the **APA** output style to use the **Full Journal** portion of the journals term list.

### Step 1.

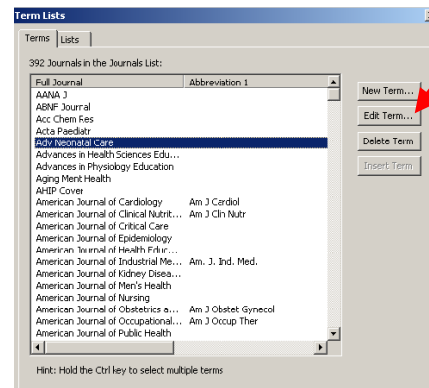
Go to: **Tools > Open Terms Lists > Journals Term List**

In the **Term Lists** under the **Terms** tab you will need to be sure that only Full Journal names appear in the **Full Journal** column.

If there are abbreviated journal titles in the Full Journal column

- highlight the abbreviated journal name
- select **Edit Term**
- move the abbreviated title to **Abbreviation 1** column
- retype the full journal name in the **Full Journal** column
- click **OK**

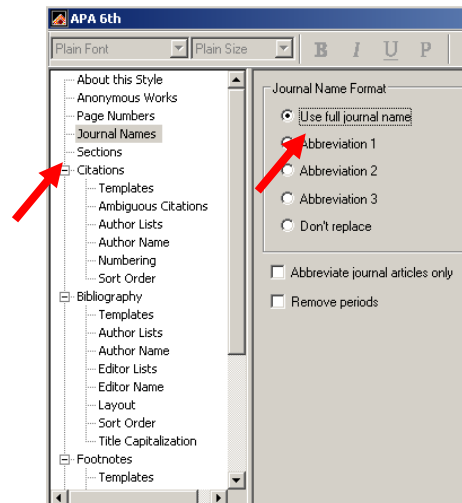
When you have completed this task, close the Terms Lists.



### Step 2.

Go to: **Edit > Output Styles > Edit APA 6<sup>th</sup>**

- In the APA 6<sup>th</sup> style template window select **Journal Names** from the left column.
- Select “**Use full journal name**” from the right column
- Go to **File > Save As** and save the file with a slightly different name. (You do not want to overwrite the original file. (e.g. <APA6th\_full>)  
**NOTE:** EndNote will not let you save the edited file with the same file name; EndNote will add copy to the end of the file name or you can rename the file.
- Go to **Edit > Output Styles > Open Style Manager**
- Select the newly edited APA file (e.g. <APA6th\_full>)
- This style will now become available for your use.



Return to your word processor.

From the EndNote toolbar, select **Format Bibliography with output style**, select the edited APA style (e.g. <APA6th\_full>). Full journal names should display.

## In-text Citations--Corporate Author Adjustment

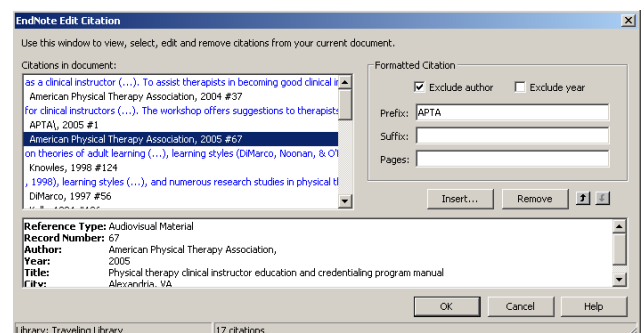
**Corporate name abbreviation** after first occurrence:

For example: *American Physical Therapy Association*

In MSWord, click on the citation you want to edit, then go to **Tools > EndNote > Edit Citation**.

Select the option to **Exclude Author**, then enter abbreviation (APTA) in the **Prefix** field. Then click **OK**.

This will need to be done for each occurrence in the document.



## More About Output Styles

**NOTE:** The output style used in your paper is determined by the journal to which you are submitting or by your department's thesis committee or others. It is best to check with the publisher before starting the paper. If the style you need is not in the Output Styles Manager, you can do a **Google search** of the **journal title** with **output style** to see if the publisher has created the needed output style file.

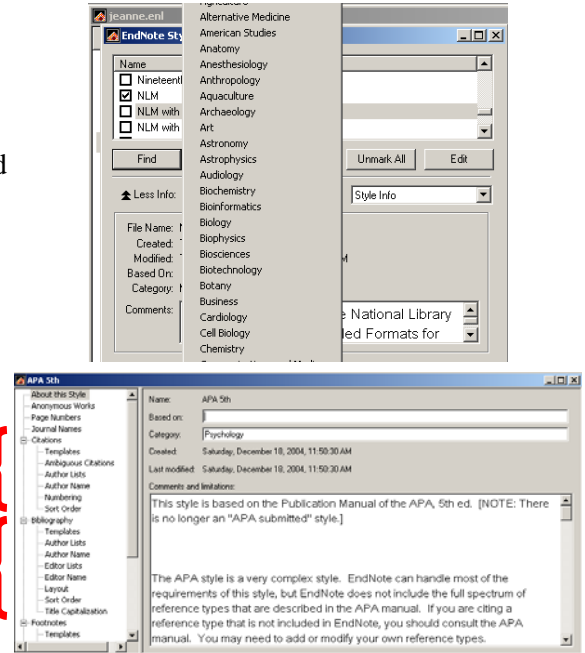
### Selecting Output Styles for Use

Path: **Edit > Output Styles > Open Style Manager**

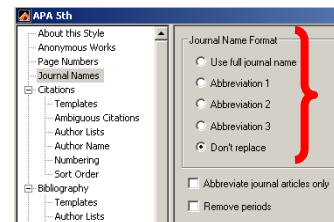
Note that you can search for a style by broad subject area. The output styles you are most likely to use can be checked so that they will be available for use when formatting the bibliography.

### Edit an Output Style

The specific output style you want to use may not be available from the list of 3379 output styles. If that is the case, you can select a style that is similar and edit it. Path: **Edit > Output Styles > Edit <selected style>** From the style dialog box make appropriate changes. Changes can be made to the **Citations** (in-text) and the **Bibliography**.



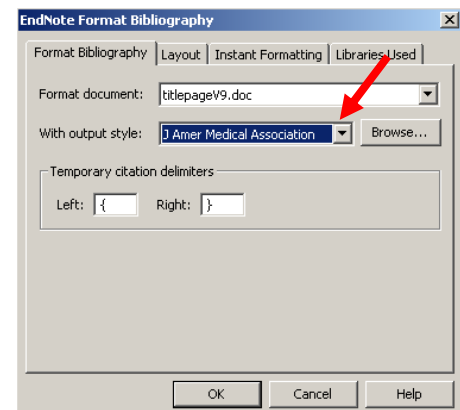
Selecting **Journal Names** allows you to indicate which Journal Name Format you want to use. In other words, the EndNote software pulls the journal name from the EndNote record when creating the bibliography; if you would prefer it to pull from the Journals Term list select the appropriate **Journal Name Format**.



After making changes to an output style, do a **Save As** and save the file with another name. This is so you do not overwrite the original file.

The bibliographic style selected in the **Format Bibliography** dialog box determines how EndNote formats the citations in your paper (in-text citations) and the references in the bibliography at the end of your paper. The output style takes care of text styles, punctuations, and sorting required for the citations and bibliography, as well as which fields are included in the bibliography.

You can use **Format Bibliography** to select a different style and reformat your document at any point.



## Subject Bibliographies

- In EndNote, select all the references you want to include in the subject bibliography
- Select **Tools > Subject Bibliography**
- From the **Subject Fields** list select the headings for your subject bibliography. For example, this could be **keyword** (as shown in the figure to the right) or author or year. Then click **OK**. (You can select more than one field by using CTRL/click.)
- From the list of **Subject Terms** that appears, select the terms that will become the subject headings in the bib. (For example: this could be selected keywords that will head a subset of citations. See figure to right.) Then click **OK**.
- The subject bibliography is ready for printing. Press the **Print Preview** or the **Print** button.
- **Note:**
  - **Output style** is selected from the pull down menu
  - **Layout** button affects:

### References

- Select the **Output Style** (e.g. APA 5ht)
- Reference List Title
- Bibliography Sort Order

### Terms

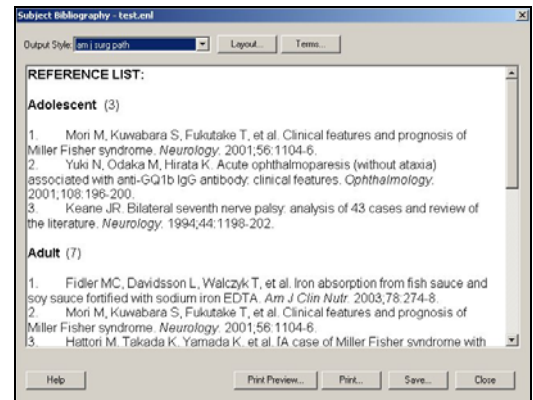
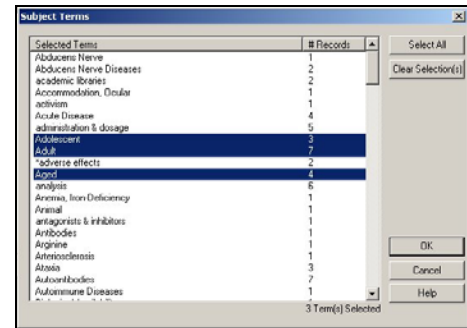
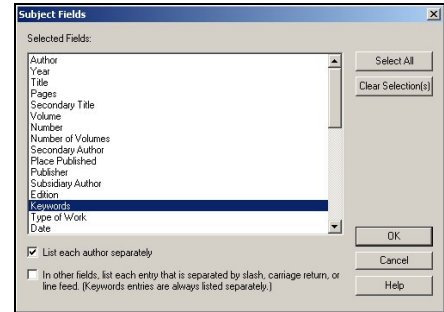
- how the subject terms display

### Page Layout

- font style, font size, margins, etc.

### Bibliography Layout

- start and end reference with; hanging indent; number references beginning with



## Creating Multiple Bibliographies in a Single Word Document

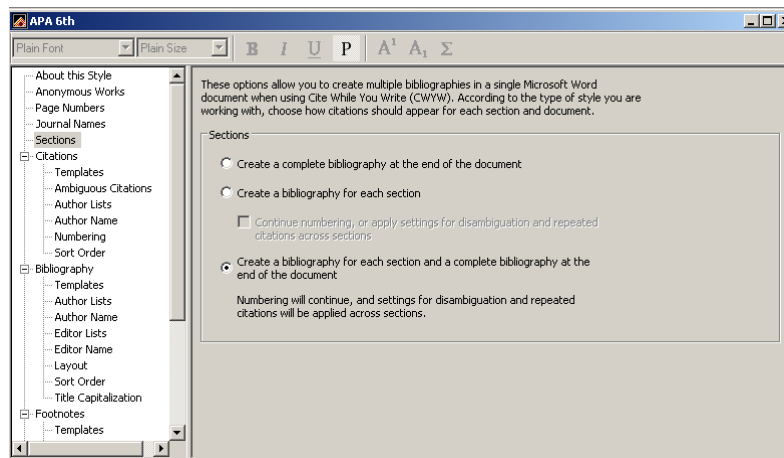
**Output style** options are available so that you can choose to:

- Create a single, complete bibliography at the end of the document (the default setting for almost all of the supplied output styles).
- Create a bibliography for each section in the document.
- Create a bibliography for each section and also a complete bibliography at the end of the document.

**To add sections to an MS Word document:**

- In Microsoft Word 2003
  - Insert > Breaks > select Next Page, Continuous, Even Page or Odd Page
- In Microsoft Word 2007
  - On the Page Layout tab, click on Breaks, and then choose one of the four options under Section Breaks: Next Page, Continuous, Even Page or Odd Page

**NOTE:** Many output styles are defined to allow for multiple bibliographies in a single word document. For example **APA 6<sup>th</sup>** (sections) or **Chicago 15<sup>th</sup> B** (sections). These styles are already defined to format a bibliography for each section and do not need modification.



### Additional Formatting Notes

*When working with sections in Word, please note that:*

- EndNote always inserts a blank line between the final text of each section and the reference list for that section.
- When you format a reference list at the end of each section, the bibliography title will be used from the Layout tab of Format Bibliography. If you do not want a title for each section bibliography, ensure the **Bibliography Title** text box on the **Layout** tab is empty.
- If you have instructed the output style to “Create a bibliography for each section and a complete bibliography at the end of the document,” but you have only one section in the Word document, a complete bibliography will appear twice — once for the end of the section, and once as a complete bibliography for the entire document.
- If you have multiple sections in your Word document, and switch from formatting with a style that formats sections individually to a style that formats a single, cumulative bibliography...you will see the section bibliographies disappear! If you want them back, make sure to format with a style that formats sections individually.

### Using EndNote with Palm OS® Handheld Devices

- You can enter EndNote references into your desktop version of EndNote.
- You can enter EndNote references into your handheld device.
- You can synchronize files between your desktop EndNote Library and your handheld EndNote Library using standard HotSync® commands.
- You can beam individual references to another Palm OS handheld

### Hardware and Software Requirements

- Handheld device
- Palm Operating System 4.x or later
- It is NOT compatible with 6.2 or later
- Serial or USB communication for HotSync operations
- 16 MB RAM, with at least 8 MB available

### Installing EndNote for Palm OS

- As you install or upgrade the EndNote X3 software, the system will ask if you want to install the EndNote for Palm OS software
- Designate a single EndNote Library for syncing
- Perform an initial HotSync to copy EndNote software to device and then perform a second HotSync to copy the Library to the device
- A HotSync cannot be initiated from within EndNote.
- Handheld Library must reside in main Palm memory; Library cannot be saved to an expansion card

### Synchronizing Libraries

- To change the designated sync library go to
  - **Tools > Configure Palm Sync** and use the dialog to select a library
- You can only have **ONE single library on your Palm**. If you perform a HotSync operation with a new library, any existing library on your Palm device will be replaced
- Entire designated library is synchronized; cannot copy selected references to handheld
- Images cannot be added on the handheld device
- If you delete a reference with an image from your handheld device, synchronizing will delete both the reference and its image from the desktop library
- Only the name of the image is displayed in an image field on the handheld device. The image name is locked so that you cannot edit it on the handheld; this ensures that the file attachment on the desktop remains intact

### Using EndNote on your Palm OS

- Tap on the EndNote icon
- The designated Library displays; highlight and tap Open to display references
- Reference list:
  - Title bar shows name of current Library
  - First author, year and title are truncated within column
  - Tap on column header to sort list
  - Use the keypad to jump to a place in the list
  - Tap on a row to select it; tap twice to open the reference in order to view or edit
  - To create a new reference; tap **New** button
    - Enter needed citation information

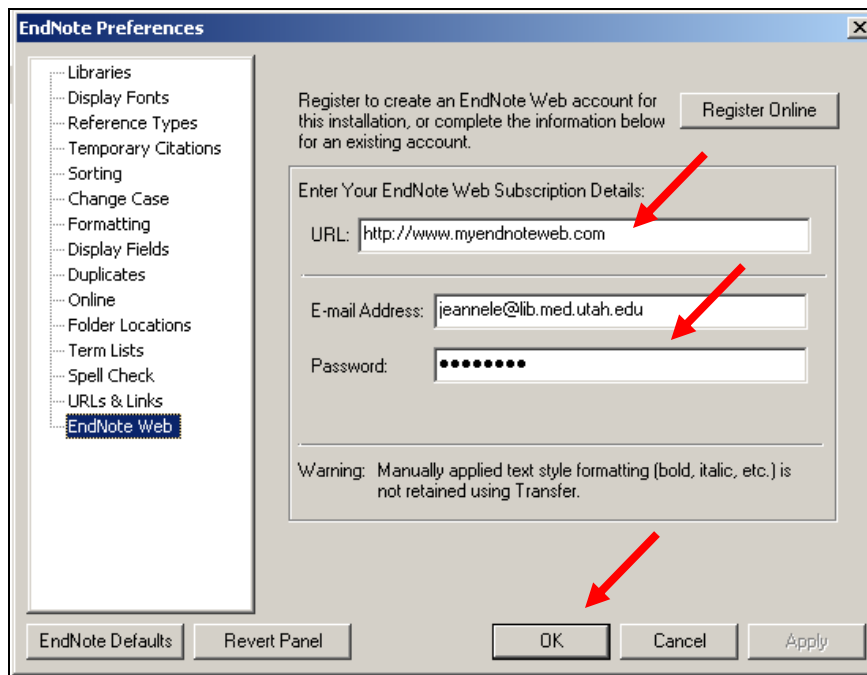
### Beaming References Between Handhelds

- You can beam a single reference or group of highlighted references
- You cannot beam the application itself
- From the **Reference** menu, select **Beam Reference**

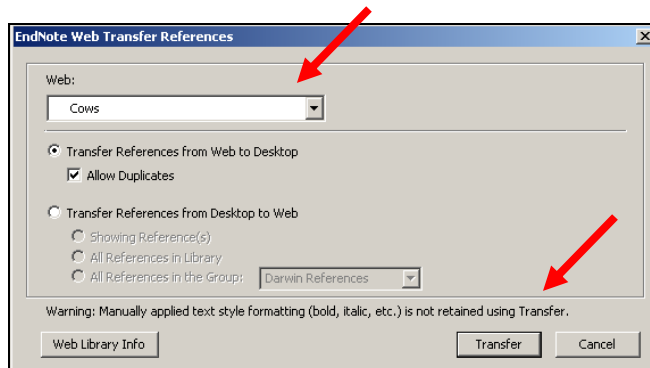
## Transferring EndNote Web References to EndNote

In EndNote (the desktop application)

1. Go to **Edit > Preferences > EndNote Web**
2. Enter this URL in the “Enter Your EndNote Web Subscription Details:” box  
**http://www.myendnoteweb.com**
3. Enter your **email address** and **password** that you created to use EndNote Web
4. Click **OK** to save the preferences (you will not need to do this again)



5. Still in EndNote (desktop application) – Go to **Tools > EndNote Web**
6. The program searches and finds your EndNote Web database; you will need to be connected to the Internet
7. Make appropriate choices

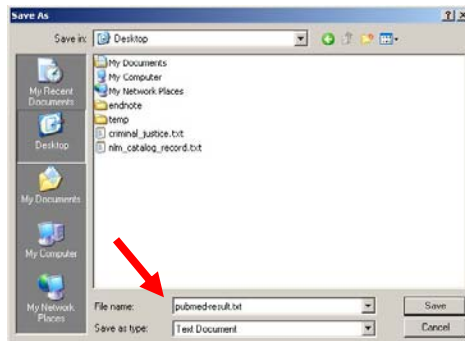
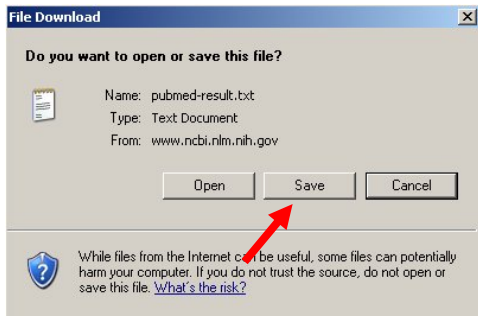
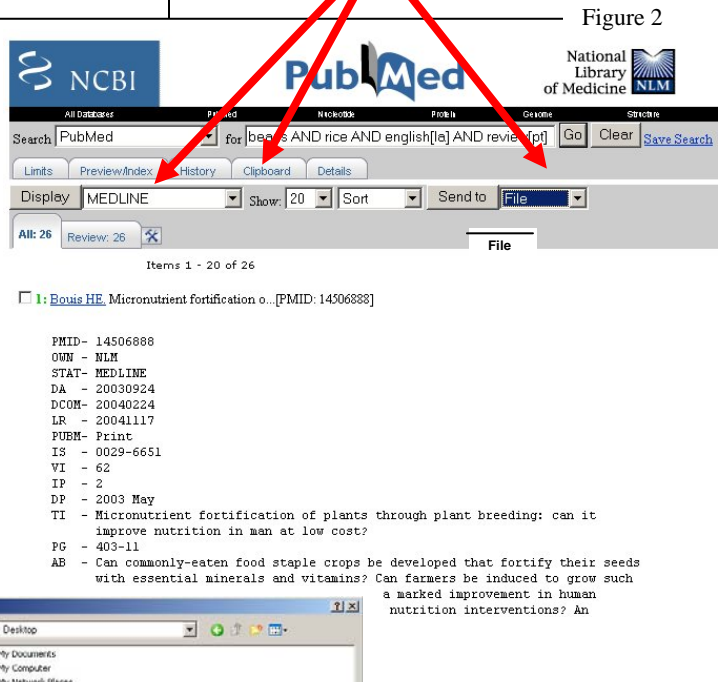
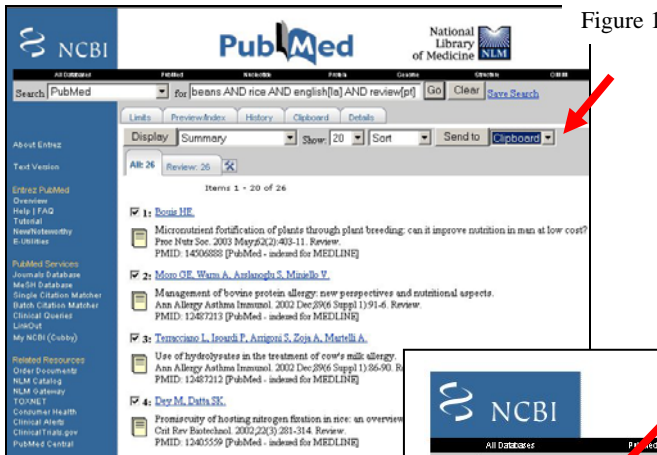


8. Click **Transfer**

# Saving PubMed Citations for Use with EndNote

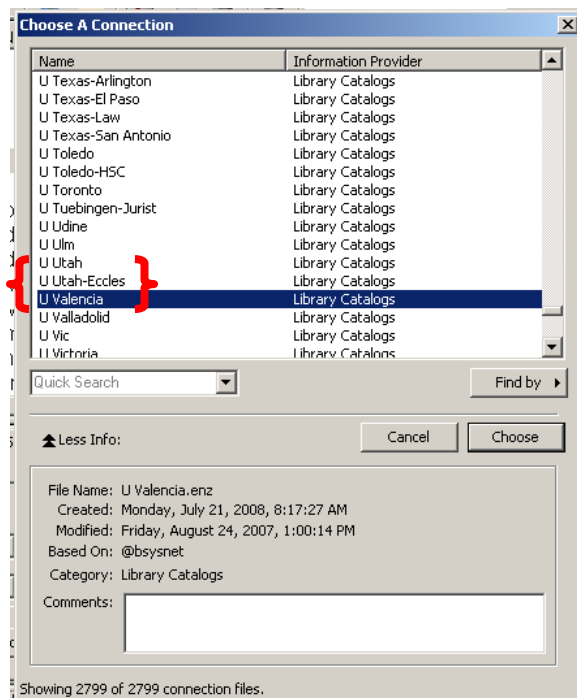
In order to **Import** citations from PubMed to EndNote do the following steps:

1. Perform your literature search
2. Select items of interest by clicking on the check box to the left of the citation
3. Use the **Send to** pull-down menu to place items in the **Clipboard** (See Figure 1)
4. When you are done placing citations of interest in the Clipboard, click on the **Clipboard** tab (See Figure 2)
5. Use the **Display** pull-down menu to change format to **MEDLINE** (See Figure 2).
6. From the Send to pull-down menu, select **File** (See Figure 2)
7. From the **File Download** dialog box (see Figure 3) click **Save**; name the file as **<name.txt>** (See Figure 4).



## University of Utah Library Catalogs are available for Searching

The J. Willard Marriott Library and the Spencer S. Eccles Health Sciences **Library Catalogs** are available for searching within EndNote by selecting them from the **Choose A Connection** list.



### NOTE:

- J. Willard Marriot Library is listed as **U Utah**
- Spencer S. Eccles Health Sciences Library is listed as **U Utah-Eccles**

