



# MC/SCUG

Medical Center / Small Computer Users Group

## Wednesday, December 6, 1995

### NOON

# *NetPharmacology:*

## *Using the World Wide Web to Teach Pharmacology*

**Donald K. Blumenthal, Ph.D., Associate Professor,  
Pharmacology and Toxicology, College of Pharmacy**

*NetPharmacology* (<http://lysine.pharm.utah.edu/>) is a network-accessible, multimedia/hypertext version of the handouts and learning aids used in teaching cardiovascular pharmacology to medical and pharmacology students. The present version includes lecture notes, prototype drug lists, 3-dimensional drug structures, annotated exam questions, and a glossary which are all hypertext-linked. Dr. Blumenthal will demonstrate *NetPharmacology*, will discuss how it was developed, and will share his plans for future development of this program.

Come with your questions, your lunch and your friends to the December MC/SCUG meeting, Wednesday, December 6, 1995 at NOON in Classroom C, School of Medicine Building.

#### **ABOUT THE MEDICAL CENTER SMALL COMPUTER USERS GROUP**

MC/SCUG is an informal group of computer users who enjoy keeping informed about the latest developments in computer applications of all types. Monthly presentations focus on current topics of interest. There is no membership fee. You are welcome whenever you are able to come. MC/SCUG meetings are held on the first Wednesday of the month (except during the Summer Quarter) in Classroom C, School of Medicine Building. If you would like more information about MC/SCUG or if you would like to suggest a topic for a MC/SCUG meeting, please contact Joan M. Gregory, Coordinator, MC/SCUG, Spencer S. Eccles Health Sciences Library, (801) 581-5269, INTERNET: [joang@ecclab.med.utah.edu](mailto:joang@ecclab.med.utah.edu). If you are interested in receiving e-mail notification of future MC/SCUG meetings, send an e-mail message to: [listserv@ecclab.med.utah.edu](mailto:listserv@ecclab.med.utah.edu). The text of the message you send should include **ONLY** the following words: **subscribe MCSCUG**

#### **IN THIS ISSUE**

MC/SCUG Meeting .....	1
Computer-Based Learning Discussion Group .....	2
Library Services News: New Videos, Finding Books, Library Hours .....	2-4
Library Services News: Online Catalog, FAX and Document Delivery .....	5-6
UUCG Update .....	6-7
<i>HyperBrain Version 1.0</i> .....	8
Outreach Services: <i>GM/LD</i> Search Strategy .....	9-11
Announcing CliniWeb .....	11-12
Access to Networked Databases .....	12-14
Internet Navigator Course .....	14-16
Internet Basics: Using <i>Netscape</i> for FTP .....	16-19
<i>IAIMS Newsletter</i> Deadline and Mailing List .....	19

DECEMBER 1995  
VOLUME 11  
NUMBER 3

UNIVERSITY OF UTAH HEALTH SCIENCES CENTER • PUBLISHED BY THE SPENCER S. ECCLES HEALTH SCIENCES LIBRARY • UNIV. OF UTAH • BLDG. 589 • SALT LAKE CITY, UTAH, 84112 • PHONE: (801) 581-5269 • FAX: (801) 581-3632 • EDITOR: JOAN M. GREGORY • INTERNET: [JOANG@ECCLAB.MED.UTAH.EDU](mailto:JOANG@ECCLAB.MED.UTAH.EDU) • LIBRARY SERVICES NEWS EDITOR: JEANNE M. LEBER • COPY EDITOR: JEFF SEAMAN

IAIMS  
N  
E  
W  
S  
L  
E  
T  
T  
E  
R

# COMPUTER-BASED LEARNING DISCUSSION GROUP

December Meeting Cancelled

# LIBRARY SERVICES NEWS

New Videos in Computer and Media Services

The December meeting of the Computer-Based Learning Discussion Group has been cancelled. Regular meetings will resume in January.

If you are interested in computer-based learning (CBL), you are invited to join the Computer-Based Learning Discussion Group. The purpose of the group is to share information about developing and evaluating computer-based learning as well as curriculum integration issues. Depending upon the interests of the group, discussion may include, but not be limited to, some of the following topics: use of multimedia technologies, how to find suitable programs in various subject areas, how to get started in planning your own CBL program, authoring system and platform advantages/disadvantages, hints for effective information structuring and interface design, incorporating CBL programs into the curriculum, and methods of evaluating CBL.

For more information, contact Sharon E. Dennis at (801) 585-3928, or via electronic mail: [sdennis@ecclab.med.utah.edu](mailto:sdennis@ecclab.med.utah.edu).

These videos may be checked out for a one-week period to University of Utah staff, faculty and students, or borrowed through interlibrary loan. They are available at Computer and Media Services on the lower level of the Spencer S. Eccles Health Sciences Library. For more information call Nancy Litz, (801) 581-8052.

## VT3 83-80 Miracle of Life

A new 1/2 VHS copy of a famous NOVA program by Swedish photographer Lennard Nilsson on human reproduction. (60 minutes)

## VT3 95-84 Pt. 1 Emporiatics: Preventing and Treating Travel-Related Illness

After completing this telecourse you should be able to: describe the principles of the medical discipline known as emporiatrics; list the steps and goals of the pre-travel office visit; outline the special needs of pediatric travelers; list the major resources for obtaining current information on the treatment of travel illnesses. An NCME video. (30 minutes)

## VT3 95-84 Pt. 2 Cutaneous Manifestations of Diabetes

Dr. Josef Jelinek, New York University Medical Center, discusses three cutaneous conditions that are virtually diagnostic of diabetes and describes other skin conditions which occur most commonly in the diabetic population. An NCME video. (10 minutes)

## VT3 95-85 Stroke Rehabilitation: AHCPR Clinical Practice Guideline

The Agency for Health Care Policy and Research developed the guideline summarized in this program to assist primary care providers and rehabilitation specialists in the planning of care following the acute phase of treatment for stroke. The role of the patient's family is stressed. An NCME video. (60 minutes)

# LIBRARY SERVICES

## New Videos in Computer and Media Services

### VT3 95-86 Alzheimer's Disease ... A Wilderness Explored

An update on what we know and what we speculate about this devastating disease. Patients and their family members present the human side, while leading clinicians and researchers detail their work on the etiology, with a specific concentration on the genetic link which may yield the key to prevention and/or management. An NCME video. (30 minutes)

### VT3 95-87 Standards for Infection Control: An Update for Healthcare Workers

A detailed overview of how infections are spread and how healthcare workers can protect themselves and others. The program pays special attention to bloodborne infections such as hepatitis B and AIDS and the resurgence of Tuberculosis. A Medcom video. (45 minutes)

### VT3 97-88 When Someone You Love Is a Cancer Survivor

Cancer survivors and their families give you a candid look at some of the changes they experienced and how they dealt with them. In addition, medical experts give an overview of the common effects cancer has on individuals, families, and friends. A Medcom video. (31 minutes)

### VT3 95-89 Focus on Rheumatoid and Osteo Arthritis

CenterNet Teleconference. (90 minutes) 10/3/95

### VT3 95-90 The Future of University Teaching Hospitals

CenterNet Teleconference. (90 minutes) 10/25/95

### VT3 95-91 Bench to Bedside

CenterNet Teleconference, with Anthony J. Fauci, M.D., Ph.D., Director of the National Institute of Allergy and Infectious Diseases. (90 minutes) 11/8/95

### VT3 95-92 The Universe Within: An Incredible Voyage into the Microworld of the Human Body

A recent NOVA program. Segments cover the coordination of muscles, bones, heart, and circulatory system; the amazing immune system as white blood cells combat a dangerous gangrene infection (with some wonderful computer animation); the body's digestive dynamo that turns a simple sandwich into raw energy; and the development of a new human life. (90 minutes)

### VT3 95-93 Handmaidens

An incisive history of Nursing by Barbara Bird. (33 minutes)

### VT3 95-94 UtahLink

Utah's educational connections via the Internet. (30 minutes)

# LIBRARY SERVICES NEWS

## Where Can I Find It?

by  
Amy Mortensen,  
Stacks Manager,  
Spencer S. Eccles  
Health Sciences  
Library

"The book I need is not on the shelf. Where can I find it?" In my short time as the Stacks Manager at Eccles Library, I have been asked this question more than any other. There is nothing more frustrating than not being able to locate a journal or book in the library's collection. Usually the book is being used by someone else in the library, and will be back on the shelf later that day. Sometimes it is checked out, at the bindery, or being repaired. Occasionally, it has been lost, or was never returned by a borrower.

Whatever the case, you can save time and avoid nail-biting by requesting a Search at the Circulation desk. We will call you when the item is located and hold it for you for three days if it's a journal, or for five days if it's a book. You can also use the Horizon Online Catalog to do a little searching yourself. Check the Status window to see if an item is checked out, at the bindery, or in cataloging. You can request that an item be held for you when it is returned by clicking on the "Make Request" button, and entering your ID barcode number. This is the number on the back of your University of Utah ID card, it begins with the numbers 21114. Include your phone number in the comment box to ensure that we can contact you when the item is returned.

If you have questions about any circulation issue, I can be reached at the Circulation Desk, (801) 581-8772, or by e-mail: [amortensen@ecclab.med.utah.edu](mailto:amortensen@ecclab.med.utah.edu).

# LIBRARY SERVICES NEWS

## Library Hours

### EXTENDED HOURS

Wednesday, December 6, 1995	7:00 am - Midnight
Thursday, December 7, 1995	7:00 am - Midnight
Friday, December 8, 1995	7:00 am - 11:00 pm
Saturday, December 9, 1995	9:00 am - 11:00 pm
Sunday, December 10, 1995	11:00 am - Midnight
Monday, December 11 - Wednesday, December 13, 1995	7:00 am - Midnight
Thursday, December 14, 1995	7:00 am - 11:00 pm

### CHRISTMAS BREAK

Friday, December 15, 1995	8:00 am - 5:00 pm
Saturday, December 16, 1995	9:00 am - 6:00 pm
Sunday, December 17, 1995	Closed
Monday, December 18 - Friday, December 22, 1995	8:00 am - 5:00 pm
Saturday, December 23, 1995	9:00 am - 6:00 pm
Sunday, December 24, 1995	Closed
Monday, December 25, 1995	Closed
Tuesday, December 26 - Friday, December 29, 1995	8:00 am - 5:00 pm
Saturday, December 30, 1995	9:00 am - 6:00 pm
Sunday, December 31, 1995	Closed
Monday, January 1, 1996	Closed

### RESUME REGULAR HOURS

Tuesday, January 2, 1996	7:00 am - 11:00 pm
--------------------------	--------------------

## LIBRARY SERVICES NEWS

### Windows, Macintosh, and Telnet Access To Eccles Library Online Catalog Now Available

The Horizon Online Catalog is a computerized index to library materials owned by the Spencer S. Eccles Health Sciences Library, the Hope Fox Eccles Clinical Library, and participating members of the Utah Health Sciences Library Consortium (UHSLC). It contains records of books, journal titles and holdings, audiovisuals, University of Utah Health Sciences theses, and government documents.

The Horizon software, a product of Ameritech Library Services, provides both text-based and graphical interfaces to the online catalog.

If you are a student at the University of Utah or are a member of the University of Utah faculty or staff and you are using Macintosh System 7 or Microsoft Windows (3.1 or Windows 95), graphical Horizon client software is available by contacting the Eccles Library Reference Desk, (801) 581-5534. Brochures on how to obtain, install and search the library's online catalog via the Macintosh and Windows graphical interfaces are available at the Reference Desk as well.

It is also possible to telnet to the Spencer S. Eccles Health Sciences Library Online Catalog:

telnet address:        library.med.utah.edu  
login as:                guest

When you are prompted for a password, just press the ENTER key. Telnet provides a text-based interface to the online catalog.

If you are at the University of Utah and you are using IBM OS/2 (2.1 or WARP) or X-Windows on a SUN running SOLARIS, and are interested in using the graphical OS/2 or X-Windows clients, please contact Joan M. Gregory, (801) 581-5269, INTERNET: joang@ecclab.med.utah.edu to arrange to test the new Horizon client software for these operating systems.

### **NEW FAX PRICES - Effective January 1, 1996**

In response to your requests, we have evaluated and lowered FAX prices at Eccles Library:

Document Delivery and personal FAX prices

    \$.20 per page to FAX anywhere in Utah

    \$1.00 per page to FAX outside the state of Utah, but within the continental U.S.

    \$2.00 per page to FAX to Hawaii, Alaska, and the rest of the world

Personal phone cards may be used to charge the long distance fees with only a \$.20 per page charge. Campus accounts may also be used for billing.

The cost to receive a FAX at Eccles Library will continue to be \$.50 per page.

The charge to receive an Interlibrary Loan FAX is the cost of obtaining the interlibrary loan plus \$ 2.00.

## LIBRARY SERVICES NEWS

### FAX and Document Delivery Prices

# LIBRARY SERVICES NEWS

## FAX and Document Delivery Prices

## UCC UPDATE

## Changes in u.cc.utah.edu login

### DOCUMENT DELIVERY PRICES

Document Delivery service is for materials owned by Eccles Library.

Library pulls and copies material	\$ .30 per page
Library pulls, copies and FAXes within Utah	\$ .50 per page
Patron pulls material, library copies	\$ .20 per page
Library pulls material	\$ .50 per item
4 hour rush	additional \$ 3.00 charge per article
Delivery to University Health Science Offices	no charge

An electronic document delivery request form is available from the Eccles Library home page (<http://www-medlib.med.utah.edu/>). Under the heading Library Services and Publications, select ILL Document Delivery and then select either the book or journal request form. If you have any questions, please contact Camille Salmond or John Barlow at (801) 581-5282.

In early November, the University of Utah Computer Center switched over to new computer equipment, a SUN SPARC 1000 "back end" server. The first time you log into u.cc.utah.edu following the switchover, you may be greeted with the following message. [NOTE: If you are using a dialing script and the script errors out, you may need to log in manually (one time only). ]

```
*****  
UNIX(r) System V Release 4.0 (cor)
```

```
login: your account  
Password:  
Password does not decrypt secret key for unix.6232@oz.cc.utah.edu.  
Warning: USER environment variable could not be set.  
*****
```

Do not despair! This message is followed by a "Welcome to the new u.cc.utah.edu system" message:

```
*****  
-- Welcome to the new u.cc.utah.edu system --
```

We believe this is your first login attempt since the switch to the new system. The new u.cc.utah.edu consists of a new Sun Sparc 1000 "back end" server for handling mail and storing and serving your home directory. There are also a couple of "front end" processor machines to which you will actually login. The particular machine you attach to for login will be depend on the various processor loads of each machine.

All of the machines now run Sun's Solaris 2.X operating system and the associated NIS+ authentication processes. In order to continue you will need to set an NIS+ Secure RPC password. This will only need to be done this one time. This will be done for you now, but you will need to re-enter your password. Please do so below.

Thanks,  
UCC Systems Staff

```
*****
```

# UCC UPDATE

## Changes in u.cc.utah.edu login

Following the welcome message, there MAY be a rather long pause. BE PATIENT ... wait for the following prompt to appear. Then, re-enter your password as requested.

Please enter the login password for your account:

Once you have re-entered your password, you will be logged in and the system will respond:

```
OK done
Wed Nov 15 12:53:37 MST 1995
TERM = (vt100)
```

If you follow all these instructions and still encounter problems logging in, for instance, if you still get a message that looks like this:

```
*****
login: your account
Password:
Password does not decrypt secret key for unix.6232@oz.cc.utah.edu.
Last login: Fri Nov 17 11:03:14 from medlib.med.utah.
Warning: USER environment variable could not be set.
Fri Nov 17 11:04:47 MST 1995
TERM = (vt100)
*****
```

OR if you try to read your e-mail and you get a message that looks like this:

```
*****
Who are you? (Unable to look up login name)
*****
```

Then, CALL THE COMPUTER CENTER HELPLINE at (801) 585-HELP, as they will need to upgrade your account.

NOTE: The menu for University of Utah Internet Services has changed. Many of the letters have changed as well (e.g., choose 'm' for mail, rather than 'p' for pine mail). The new menu is reprinted here:

```
*****
```

### University of Utah Internet Services

```
modt -- Message of the Day          use -- System Use-Policy

w -- World Wide Web (lynx)          c -- UNIX Command Shell (csh)
m -- Electronic Mail (pine)         t -- UNIX Command Shell (tcsh)
ph -- E-mail & Phone Directory (ph) f -- File Management [menu]
n -- Usenet News (tin)              z -- Download or Upload Files
o -- Other Internet Commands [menu]

r -- Run Application Software [menu] x -- Exit Menu
```

Select choice [or help, x, top, bye]:

```
*****
```

The goal of this equipment replacement is to improve the delivery of computer services to University of Utah faculty, staff and students. If you encounter any problems in accessing or using your account, please contact the University of Utah Computer Center at (801) 585-HELP.

# **HYPERBRAIN VERSION 1.0**

by  
Michael A. Thelin,  
Sr. Library  
Specialist,  
Spencer S. Eccles  
Health Sciences  
Library

*HyperBrain 1.0* is a core resource for neuroscience education. Its purpose is to complement, supplement or substitute for a traditional neuroanatomy laboratory. It is not intended to replace an entire neuroanatomy course and it is assumed that the student either reads independently or has some background from lecture or personal interest. The program is very interactive and is linked to either the *Slice of Life VI* or *Slice of Brain I* videodisc of multi-disciplinary images.

The syllabus, written by O.E. Millhouse and S.S. Stensaas, is linked to over 700 images. Glossary terms are also linked to over 1400 illustrations. Each of 14 chapters is followed by a quiz with images and learning responses for correct and incorrect answers. Midterm and final "practical" exams are provided from a bank of images randomly presented with 150 questions. Pathway diagrams taken from Duane Haines' *Neuroanatomy Atlas* provide a substrate for animated quizzes linked to the videodisc and the atlas. An index of images of gross and microscopic neuroanatomy, neuropathology, neuroradiology as well as the 500 images from the *Bassett Stereoscopic Atlas* (in 2D or 3D) covering the head, neck, and spine is included permitting free text searching of the image index. All 100 of the digitized syllabus figures are labeled and each label is linked to the glossary. A core resource includes: atlas in three planes, animated reflex diagrams, and links to appropriate files on the *Interactive Brain Atlas CD-ROM*. The neurology section includes 38 short clinical cases.

*HyperBrain 1.0* is designed to expand as new modules are developed. The program has been left unlocked so faculty familiar with *HyperCard* may make modifications. Links to launch other programs which you can acquire from the *Slice of Life* office or other sources are also built in. Examples are: *Interactive Brain Atlas CD-ROM*, *Lazy Eye (Neuro-ophthalmology)*, *The Ear*, *The Orbit*, *Cochlear Anatomy*, *Neuropathology Stack*, *Animated Embryo*, *EmbryoImages*, *Synapse: The Movie*, *NeuroNames*, *Cerebral Ventricles*, *It's Your Head*, and *NeuroLogic Atlas*.

Experience and evaluation have shown that students who systematically go through the entire program prefer having a paper copy to read and annotate for review prior to exams. To this end, the syllabus is provided with barcode list and permission to print and/or duplicate more copies.

The use of *Slice of Brain I* with the program has several additional advantages over the previous version with the *Slice of Life VI* videodisc. Both discs share the same still images. *Slice of Brain's* rotating 3-dimensional reconstructions of brain structures are spectacular, having come from the *Digital Anatomist* videodisc. Over 150 full-screen videoclips of patients' neurological signs and symptoms add tremendous clinical relevance. An added bonus is a 20 minute normal neurological exam on side 2 plus the Bassett collection in stereoscopic pairs. These can be viewed with 3-D Nintendo goggles. Links to the *Interactive Brain Atlas CD-ROM* are automatic (if the CD is inserted). This provides an additional 75 brain animations and 255 still images.

*HyperBrain 1.0* can be used with any Macintosh LC, Quadra, PowerPC or Powerbook (8 MB RAM) and a cable to a standard NTSC videodisc player and NTSC television monitor (you must supply your own cable). The Voyager

## **OUTREACH SERVICES**

### *Grateful Med/ Loansome Doc Search Strategy*

by Kathleen M.  
McCloskey,  
Associate Librarian,  
Outreach Services,  
Spencer S. Eccles  
Health Sciences  
Library

videodisc drivers for all standard videodisc players are included with the program. The application comes with a copy of the syllabus for *HyperBrain 1.0* for use with either *Slice of Life VI* or *Slice of Brain I*. There are no plans to convert the program to Windows. The software is network compatible. The syllabus, quizzes, and glossary have been translated into Spanish (*El Cerebro Electr nico* can be ordered from the Slice of Life office).

Beginning searchers will frequently start typing words without regard for the relationship between the words or for their meaning. These searchers may have some success, but may also become frustrated when the resulting citations don't reflect the topic they had intended. By planning a search, one can avoid a true "Garbage In / Garbage Out" retrieval.

#### **ALWAYS USE MeSH HEADINGS - WHEN AVAILABLE**

MeSH headings retrieve the most specific citations because they are assigned by an indexer at the National Library of Medicine who has read the article. Not using MeSH headings may retrieve citations where "a word appears" in the record as opposed to a "concept being represented". Look at, for instance, "end-stage renal disease". If these words are input in this order, citations will be retrieved, but instead of actually being about "end stage renal disease" the abstract or title might say "we noticed no end stage renal disease". The trick is to look at the MeSH headings attached to the records, here you'll see the phrase "Kidney Failure, Chronic". Many more citations, with more relevance, will be retrieved using the MeSH heading. Often it is appropriate to do a "quick and dirty" search using the keywords in the title and to analyze the MeSH headings of the relevant citations.

#### **IDENTIFYING THE CONCEPT**

The most difficult part of a bibliographic database search may be defining precisely what the topic of the search is. It is important to think about the topic and divide the search into concepts. The Input Form in *Grateful Med* forces the searcher into a Boolean format by only allowing words or MeSH headings to be "OR'd" together on a line and then inserts automatically the "AND" operator between the subject lines.

In searching, for instance, for articles on skateboarding injuries in children, you could brainstorm and come up with the following grouping of terms:

Concept #1: skateboarding or rollerblading or in-line skating or roller skating

Concept #2: injuries or fractures

Concept #3: children or adolescents (Pediatrics is not appropriate here because it refers to the specialty. It would retrieve articles about "Pediatricians injured while skateboarding")

## OUTREACH SERVICES

### *Grateful Med/Loansome Doc* Search Strategy

by Kathleen M. McCloskey, Associate Librarian, Outreach Services, Spencer S. Eccles Health Sciences Library

#### ENTERING YOUR SEARCH IN *GRATEFUL MED*

When entering your search in the *Grateful Med* Input Form remember a few key options you have: 1) The “explode” feature, available with terms that are followed by a plus ( + ), is unique to MEDLINE and other National Library of Medicine Databases, except for the Cumulative Index to Nursing and Allied Health (CINAHL) database. This capability allows one to search an entire category of the MeSH hierarchy without having to type in each narrower subject heading, such as SPORTS or CARDIOVASCULAR DISEASES. Some categories are so large that they are grouped together automatically into a category called a “pre-explosion” and are identified as (PX) when “pasted” into the *Grateful Med* Input Form. MeSH headings are identified in this way as (MH). 2) The ability to identify your concept as the “main focus of the article,” when you type in an asterisk ( \* ) before selecting the term, restricts the number of articles you will retrieve, but it makes your retrieval more specific.

The first concept entered on the lines of the *Grateful Med* Input Form is that of “skateboarding”. The *Grateful Med* list of MeSH headings refers you from skateboarding to the term SKATING which appears under the broader category of SPORTS +. The broader category might be useful if you wanted to consider “sports-related injuries” to children.

The “injuries” concept is expressed with the MeSH heading WOUNDS & INJURIES + as well as with the subheading INJURIES. Note that the hierarchy includes everything from cracked teeth to traumatic amputations.

The age-group term that restricts the citations to articles about “children” is “explodable”. The explode capability, adding a plus ( + ) before “child” in the MeSH listing in *Grateful Med*, allows you to search on the age groups from birth to 18 years old using one term.

#### TOO MUCH AND TOO LITTLE

Every searcher at one time or another encounters the problem of too many citations or too few. Learning to plan for these problems will save some time. Often it’s just knowing the available options.

**Too little.** The problem may be that the search strategy you’ve used is too narrow. We often “complicate” the issue by restricting the topic too much. Adding additional synonyms or related terms to describe a concept, or exploding a term, will increase the available pool of citations by broadening the search. Also, reducing the number of concepts you are using may provide information that is valuable while not addressing your “specific topic”. For instance, suppose you are looking for articles from JAMA in 1995 on the prevention of diabetes in twins living in Tooele. Are articles from JAMA the only ones that are acceptable? Is the fact that they live in Tooele or are twins really crucial to the issue? Be flexible and willing to adapt your search to the stated topic.

**Too much.** Restricting is actually fairly straight forward. You may choose more specific terms instead of exploding them; limit the language to English; limit to a review article; identify one or more of the MeSH headings as the main focus of

## OUTREACH SERVICES

### *Grateful Med/ Loansome Doc* SEARCH STRATEGY

by Kathleen M. McCloskey, Associate Librarian, Outreach Services, Spencer S. Eccles Health Sciences Library

the article; specify a particular age group; or restrict to human by selecting HUMAN as a MeSH heading.

#### SKATEBOARD INJURIES IN CHILDREN

When I entered the search into *Grateful Med*, this was the resulting format. Take a look at it and see where you might expand the retrieval and where you might narrow the retrieval.

SUBJECT WORDS	*Skating (MH)
and	
2ND SUBJECT	Injuries (SH) or all *Wounds a#d Injuries (PX)
and	
3RD SUBJECT	Child (PX)
and	
4TH SUBJECT	Human (MH)
ENGLISH ONLY	English Only.
PUBL TYPE	Review (PT)
JOURNAL ABBREV	JAMA

## ANNOUNCING CliniWeb

CliniWeb is a project underway at Oregon Health Sciences University designed to provide a table of contents and index to clinical medical information on the Web, allowing browsing and searching respectively. Access to information is provided by:

#### Topic

All clinical Web pages (that the project is aware of) have been indexed by a subset of the Medical Subject Headings (MeSH) vocabulary from the National Library of Medicine. Terms for searching can be accessed by:

- Searching, using the SAPHIRE term look-up system
- Browsing, through the MeSH hierarchy

#### Site

Web sites with clinical information have been organized by their institutional type.

According to the CliniWeb Home Page, "its database contains 2,500 URLs of clinical content, indexed by terms from the Medical Subject Headings (MeSH) disease tree, which can be accessed by searching or browsing. The URLs in CliniWeb are deliberately limited to clinical information at the level of health sciences students, educators, or practitioners. It does not contain information about professional societies, health science universities, or other non-clinical entities. While this information is important to many, the aim of CliniWeb is to provide the ability to navigate around such information and get directly to clinical information."

# ANNOUNCING CliniWeb

Other Clinical Information at OHSU includes:

**Intern's manual** - The pocket manual for interns in the Department of Medicine at OHSU

**Dr. Deloughery's Famous Handouts** - Handouts on a variety of internal medicine topics from OHSU

**ACP Infobase** - Limited to clients within the OHSU network, a Web version of the information products of the American College of Physicians, including the MKSAP, Journal Club, Practice Guidelines, and State of Oregon Disability Guidelines.

Use **SAPHIRE** to explore the entire **UMLS Metathesaurus**

The developers of CliniWeb are interested in feedback on how to improve CliniWeb. Take a look at their site and be sure to give them feedback, by using the feedback page built into the CliniWeb system.

CliniWeb can be accessed at the URL: <http://www.ohsu.edu/clinweb/>

## ACCESS TO NETWORKED DATABASES

by  
Jeanne M. Le Ber,  
Affiliate Librarian,  
Spencer S. Eccles  
Health Sciences  
Library

and

Mary E. Youngkin,  
Associate Librarian,  
Information  
Services,  
Spencer S. Eccles  
Health Sciences  
Library

### ACCESS TO CD-ROM DATABASES ON THE NOVELL NETWORK

The Spencer S. Eccles Health Sciences Library CD-ROM Novell network offers a number of computerized indexes to the journal literature. Databases available on the Eccles Library CD-ROM network include AIDSLINE, Bioethicsline, CINAHL (Cumulative Index to Nursing and Allied Health Literature), HealthPLAN, MEDLINE, Sport Discus, and TOXLINE.

Marriott Library CD-ROM databases accessible over the campus Novell network include BIOSIS, Chemical Abstracts, ERIC, PsycLIT, SOCIOFILE and other databases listed in the "Information Systems Handbook."

### ACCESS TO MEDLINE

SilverPlatter MEDLINE is available on DOS, Windows and Macintosh platforms. The Windows and Macintosh platforms access MEDLINE only, while the DOS version accesses MEDLINE and other databases.

The Novell Network is accessible only to University of Utah faculty, staff and students on campus. Modem or dial-in access to SilverPlatter MEDLINE is not possible.

Another version of MEDLINE is available through Marriott Library's Infogate using FirstSearch. FirstSearch is available to individuals who have accounts with the University of Utah Computer Center and is therefore accessible from off-campus. Telnet to [infogate.lib.utah.edu](http://infogate.lib.utah.edu), select FirstSearch, then All Databases, then MEDLINE. The Eccles Library is working with the University community and the state of Utah to offer statewide access to MEDLINE in the near future.

# ACCESS TO NETWORKED DATABASES

by  
Jeanne M. Le Ber,  
Affiliate Librarian,  
Spencer S. Eccles  
Health Sciences  
Library

and

Mary E. Youngkin,  
Associate Librarian,  
Information  
Services,  
Spencer S. Eccles  
Health Sciences  
Library

## DOS ACCESS, SILVERPLATTER PC-SPIRS

To access SilverPlatter CD-ROM databases from a PC on the University of Utah Novell network, at your DOS prompt, type:

```
ecclescd
```

Ecclescd is a batch file your system administrator needs to load on your network. If your system administrator has any questions about this batch file call (801) 581-3691.

If the ecclescd method does not work, an alternative method for access to SilverPlatter CD-ROM databases on the University of Utah Novell network is, at your DOS prompt, to type:

```
login edu-utah-med-ecclab/guest
```

## WINDOWS ACCESS, SILVERPLATTER WinSPIRS

To access SilverPlatter MEDLINE from Windows on the University of Utah Novell network, at your DOS prompt, type:

```
ecclescd
```

From the MEDLINE Version Menu select:

W) WINSPIRS MEDLINE Express

The ecclescd command does not work from a Windows Shell. YOU MUST BE AT THE DOS PROMPT.

## MAC ACCESS, SILVERPLATTER MacSPIRS

Macintosh users can access MEDLINE over the AppleShare Network with the MacSPIRS software. MacSPIRS can be downloaded from the network to your personal computer.

To obtain and install the Mac client:

- Go to the **Chooser** and select **AppleShare**
- Select the **Eccles Lib** zone and the **EDU-UTAH-MED-ECCLAB** file server
- Login as **guest**, there is NO password, choose **OK**
- Select **APPS**
- Double click on the **APPS** icon, which now appears on your desktop
- Double click on the **Mac folder**
- Double click on **MacSPIRS Install**
- Double click on **Installer**
- Select **Full Installation**
- Select where you want the file to go on your computer: eg: **DESKTOP**
- Click on **SAVE**
- Select **“STANDALONE only”**
- Choose **OK** as your answer to the remaining default questions.

## ACCESS TO NETWORKED DATABASES

by  
Jeanne M. Le Ber,  
Affiliate Librarian,  
Spencer S. Eccles  
Health Sciences  
Library

and

Mary E. Youngkin,  
Associate Librarian,  
Information  
Services,  
Spencer S. Eccles  
Health Sciences  
Library

## INTERNET NAVIGATOR COURSE

Utah's first  
online, multi-  
institutional  
Internet course

by  
Nancy T. Lombardo,  
Affiliate Librarian,  
Spencer S. Eccles  
Health Sciences  
Library

Once the MacSPIRS client has been loaded on your Mac, you are ready to search MEDLINE:

- Go to the **Chooser**
- Select **AppleShare**
- Select **Eccles Lib** zone
- Select **EDU-UTAH-MED-ECCLAB**
- Choose **OK**
- Login as **guest**, there is NO password
- Choose **OK**
- Hold down the **shift** key and click on **MEDX01**, **MEDX02** and **MEDX03** (They should appear on your desktop.)
- Choose **OK**
- Close the **Chooser**
- Double click on the colored **MacSPIRS icon**
- Click on the files you wish to load

Please, do not select the MEDLINE volumes MEDX01, MEDX02, MEDX03 to be automatically loaded at startup by checking the box to the right of the volume name. Our network license limits us to a specified number of simultaneous users. Each guest login constitutes a user. Please wait until you are ready to search MEDLINE to load the volumes, and then place the volumes in the trash when you are finished. A guest session disconnects two hours after the initial login.

For assistance with networked access options to MEDLINE and other databases call or e-mail: Reference staff at (801) 581-5534, [reference@ecclab.med.utah.edu](mailto:reference@ecclab.med.utah.edu) or Systems staff at (801) 581-3691, [systems@ecclab.med.utah.edu](mailto:systems@ecclab.med.utah.edu)

### INTERNET NAVIGATOR GOALS

The Internet Navigator course, funded by a Higher Education Technology Initiative grant, is sponsored by the Spencer S. Eccles Health Sciences Library and the Utah Academic Library Consortium (UALC). These libraries realize the importance of information technology and the increasing reliance on electronic media for information searching, retrieval and delivery. By providing this on-demand Internet skills course, we wish to empower the students in Utah. It is intended that this course use the most current Internet technologies to teach students to navigate the Internet effectively and access essential information resources. These skills will be valuable not only for formal education, but as life-long learning skills that will allow success as information technology evolves.

The specific goals to be achieved by this project are:

- 1) Implement an on-demand Internet course taking advantage of the newest Internet technologies.
- 2) Train students to use Internet tools and equip students with the skills required to succeed in the electronic information environment.
- 3) Initiate a collaborative interactive learning environment that eliminates time, distance and location barriers.
- 4) Establish a cooperative environment through which Utah Academic Institutions can create a shared learning environment for all Utah students.

# INTERNET NAVIGATOR COURSE

Utah's first  
online, multi-  
institutional  
Internet course

by  
Nancy T. Lombardo,  
Affiliate Librarian,  
Spencer S. Eccles  
Health Sciences  
Library

## INTERNET NAVIGATOR COURSE MODULES

Internet Navigator students will complete a set of modules. The modules will cover:

### 1 - Introduction to the Internet

Module 1 will introduce the student to basic Internet concepts.

### 2 - Communicating over the Internet

The Internet is a powerful tool for communication. A variety of electronic communication tools are examined.

### 3 - Information Systems

Internet information can be provided in many ways. This module explains the various information systems and allows the student to examine a wide variety of electronic resources and collect those of interest.

### 4 - Resource Discovery

There are many ways to locate resources on the Internet. This module examines some of the tools available to help the student search for information on specific topics.

### 5 - Providing Information on the World Wide Web

The most popular way to provide information on the Internet is via a World Wide Web Home Page. This module will teach the student the basics of creating a home page.

**If you are interested in taking this one-credit course, contact the Internet Navigator Preceptor at your institution:**

Brigham Young University  
Julene Butler  
Julene\_Butler@byu.edu  
801-378-2813

College of Eastern Utah  
Sherill Shaw  
sshaw@ac.ceu.edu  
801-637-2120 x5278

Dixie College  
David Zielke  
zielke\_d@lib.dixie.edu  
801-673-4811 x494

Salt Lake Community College  
Janet Hovorka  
hovorkja@slcc.edu  
801-957-4610

Snow College  
Mel Jacobson  
melj@cc.snow.edu  
801-283-4021 x324

Southern Utah University  
Phil Dillard  
dillard@suu.edu  
801-586-1991

University of Utah  
Spencer S. Eccles Health Sciences  
Library  
Nancy Lombardo  
nlombardo@ecclab.med.utah.edu  
801-581-5241

University of Utah  
Marriott Library  
Kenning Arlitsch  
karlitsc@alexandria.lib.utah.edu  
801-585-3721

# INTERNET NAVIGATOR COURSE

Utah's first online, multi-institutional Internet course

by  
Nancy T. Lombardo,  
Affiliate Librarian,  
Spencer S. Eccles  
Health Sciences  
Library

## INTERNET BASICS

Using *Netscape* for File Transfer Protocol (FTP)

by  
Joan M. Gregory,  
Associate Librarian,  
Technical Services,  
Spencer S. Eccles  
Health Sciences  
Library

University of Utah  
Law Library  
Marsha Thomas  
marsha.thomas@law.utah.edu  
801-581-6438

Utah Valley State College  
Mike Freeman  
freemami@uvsc.edu  
801-222-8751

Westminster College  
Tania Stastny  
t-stastn@wclsc.edu  
801-488-4279

Utah State University  
Deleyne Wentz  
delwen@cc.usu.edu  
801-797-1479

Weber State University  
Carol Hansen  
chansen@weber.edu  
801-626-6071

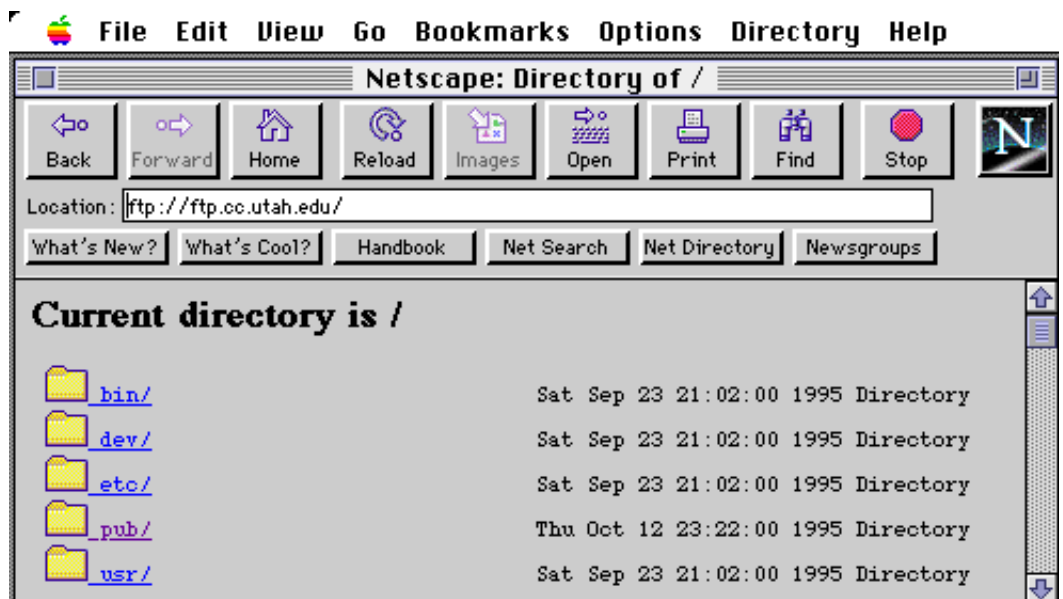
Funded by a HETI Grant. For further information, contact: Nancy T. Lombardo, Spencer S. Eccles Health Sciences Library, University of Utah, (801) 581-5241, INTERNET:nlombardo@ecclab.med.utah.edu, <http://www-medlib.med.utah.edu/navigator/navigator.html>

### WHAT IS FTP?

File Transfer Protocol (FTP) is the protocol that allows you to move files from one computer to another on the Internet. With "Anonymous FTP" you can access large repositories of documents, software applications, and graphics stored on thousands of public FTP computers and download them to your personal computer or account. These files are mostly public domain (free) and Shareware (small fee).

### USING NETSCAPE FOR ANONYMOUS FTP

To access any FTP site through *Netscape*, just type ftp:// followed by the site's FTP address into the **Location:** box at the top of the *Netscape* screen. Remember to precede the site name with ftp:// (just as you would precede a Web address with http://). For example, to go to the top level of the University of Utah ftp server, use the URL: ftp://ftp.cc.utah.edu/



# INTERNET BASICS

## Using Netscape for File Transfer Protocol (FTP)

by  
Joan M. Gregory,  
Associate Librarian,  
Technical Services,  
Spencer S. Eccles  
Health Sciences  
Library

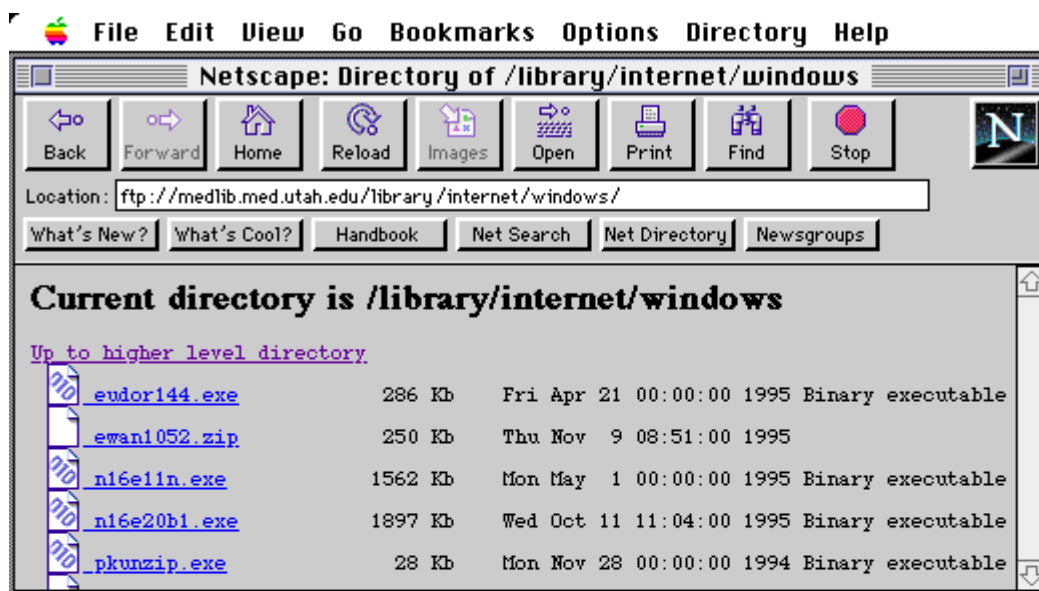
Accessing the subdirectories is as easy as pointing and clicking on the subdirectory. To access the /pub subdirectory, just point and click on the pub/ folder. Within the pub/ folder, point and click on the mac/ or pc/ folders to access the mac or pc subdirectories.

It is possible to access the subdirectory directly by typing the path to the directory or file in the **Location:** box at the top of the *Netscape* screen. To go to the /pub/mac or the /pub/pc subdirectories, use the URLs: ftp://ftp.cc.utah.edu/pub/mac or ftp://ftp.cc.utah.edu/pub/pc

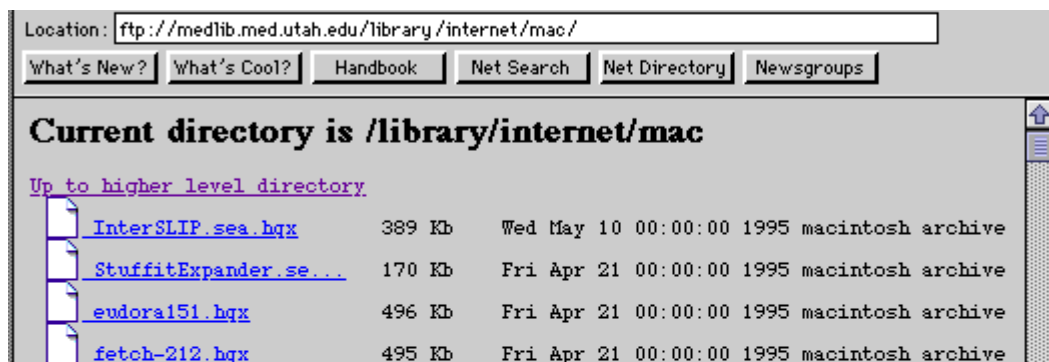
You may need to dig deep down into the subdirectories of an FTP site to find the software you wish to access. Be persistent. Once you reach the subdirectory which contains the software you need, you will want to download it to your desktop.

### DOWNLOADING SOFTWARE

To download a particular file or program, choose the file or program from the list of items available at the ftp site. For example, if you are interested in obtaining a copy of *PKUNZIP*, a program which decompresses zipped DOS or Windows programs, you would ftp to an archive where *PKUNZIP* is stored (e.g., medlib.med.utah.edu), move through the subdirectories until you find pkunzip.exe, then double click on the filename to begin the download.



As another example, if you are interested in obtaining a copy of *Stuffit Expander*, a program which decompresses compressed Macintosh programs, you would ftp to an archive where *Stuffit Expander* is stored (e.g., medlib.med.utah.edu), move through the subdirectories until you find StuffitExpander.sea.hqx, then double click on the filename to begin the download.



# INTERNET BASICS

## Using Netscape for File Transfer Protocol (FTP)

by  
Joan M. Gregory,  
Associate Librarian,  
Technical Services,  
Spencer S. Eccles  
Health Sciences  
Library

### WHERE DID IT GO?

*Netscape 1.1N* comes with default settings for storing downloads. If you wish, you may accept the default settings. However, the *Netscape* default directory may NOT be where YOU want your downloads to go.

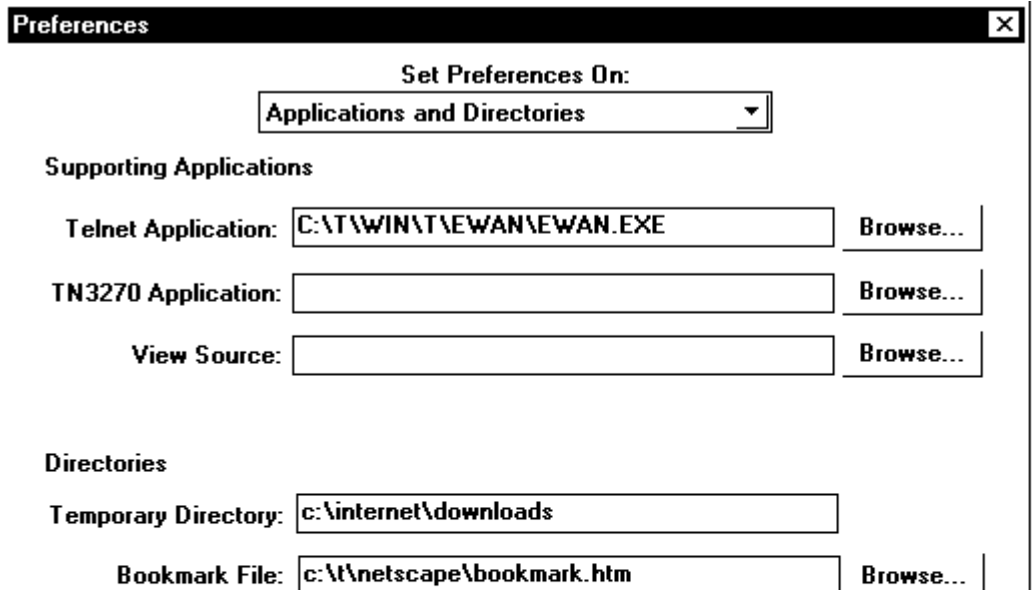
The directory for downloads is called the Temporary Directory. For the Macintosh version of Netscape, the default Temporary Directory is your SYSTEM FOLDER. For the Windows version of *Netscape*, the default Temporary Directory is c:\temp. However, when you are downloading software (i.e., for a filename with the extension “.exe”), the Windows version of *Netscape* will ask you the following question each time you start a program download: How would you like to handle this file? Save to Disk, Cancel Transfer or Configure a Viewer. To save the program to your hard drive, choose SAVE TO DISK and identify the subdirectory on your hard drive where you want the program to be stored (e.g., c:\internet\software).

### CONFIGURING NETSCAPE FOR FTP

If the word “configuring” scares you, you are not alone. Rest assured, configuring *Netscape 1.1N* for FTP is VERY EASY. All you need to do is to let *Netscape* know where it should put the software you are downloading. NOTE: For those of you using *Netscape 2.0 Beta*, no configuring is required.

To set up a **different** Temporary Directory, choose: OPTIONS from the main *Netscape* menubar, then choose: PREFERENCES. Within PREFERENCES, choose APPLICATIONS AND DIRECTORIES by clicking on the down arrow and choosing APPLICATIONS AND DIRECTORIES from among the items in the pulldown menu.

For the Windows version, in the box labeled: TEMPORARY DIRECTORY: type the path for the directory where you want your downloads to be placed (e.g., c:\internet\downloads).



# INTERNET BASICS

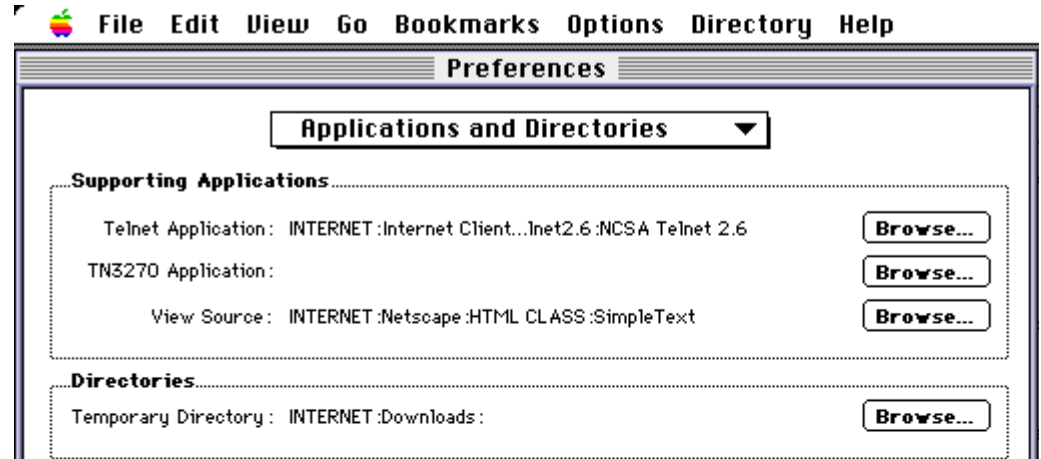
## Using Netscape for File Transfer Protocol (FTP)

by  
Joan M. Gregory,  
Associate Librarian,  
Spencer S. Eccles  
Health Sciences  
Library

## IAIMS NEWSLETTER

## Deadline and Mailing List

For the Macintosh version, use the BROWSE button to locate the folder where your downloads should be placed (e.g., INTERNET:Downloads).



Once you have designated your Temporary Directory, go back to the *Netscape* menubar, choose: OPTIONS and then choose SAVE OPTIONS to make your changes permanent.

If you have questions about using *Netscape* for FTP, please contact: Joan M. Gregory, (801) 581-5269, INTERNET: joang@ecclab.med.utah.edu.

The purpose of the *IAIMS Newsletter* is to keep the campus community informed on all aspects of computer and information technology as well as on the services provided by the Spencer S. Eccles Health Sciences Library. Articles on computer and information technology events, applications, services, education, etc. are welcome. To contribute articles to the *IAIMS Newsletter*, contact Joan M. Gregory at the address indicated below. **The deadline for the January 1996 issue of the *IAIMS Newsletter* is: December 15, 1995.**

To be added to the electronic distribution list for the *IAIMS Newsletter*, send an e-mail message to: **listserv@ecclab.med.utah.edu**. The text of the message you send should include ONLY the following words: **subscribe IAIMS** To be added to the **printed** newsletter mailing list, send the following information to: Joan M. Gregory, Editor, *IAIMS Newsletter*, Spencer S. Eccles Health Sciences Library, University of Utah, Building 589, Salt Lake City, UT 84112. VOICE: (801)581-5269. FAX: (801)581-3632. INTERNET: joang@ecclab.med.utah.edu.

### IAIMS NEWSLETTER MAILING LIST

Please add my address to the **printed** *IAIMS Newsletter* Mailing List.

Name: \_\_\_\_\_

University of Utah Department: \_\_\_\_\_

University of Utah Campus Address: \_\_\_\_\_

Company/Institution: \_\_\_\_\_

Address: \_\_\_\_\_

City: \_\_\_\_\_

State/Zip Code: \_\_\_\_\_

**Spencer S. Eccles Health Sciences Library  
University of Utah  
Building 589  
Salt Lake City, Utah 84112**

**Non-Profit Organization  
U.S. Postage Paid  
Salt Lake City, Utah  
Permit Number 1529**