



Pursuing Green Health- Assessing Sustainability of Hospital Operations



Smitha Warriar, MD FASA

Medical Director Environmental & Social Sustainability
Medical Director Anesthesia- ACC/Area E

Alexis Lee, MBA

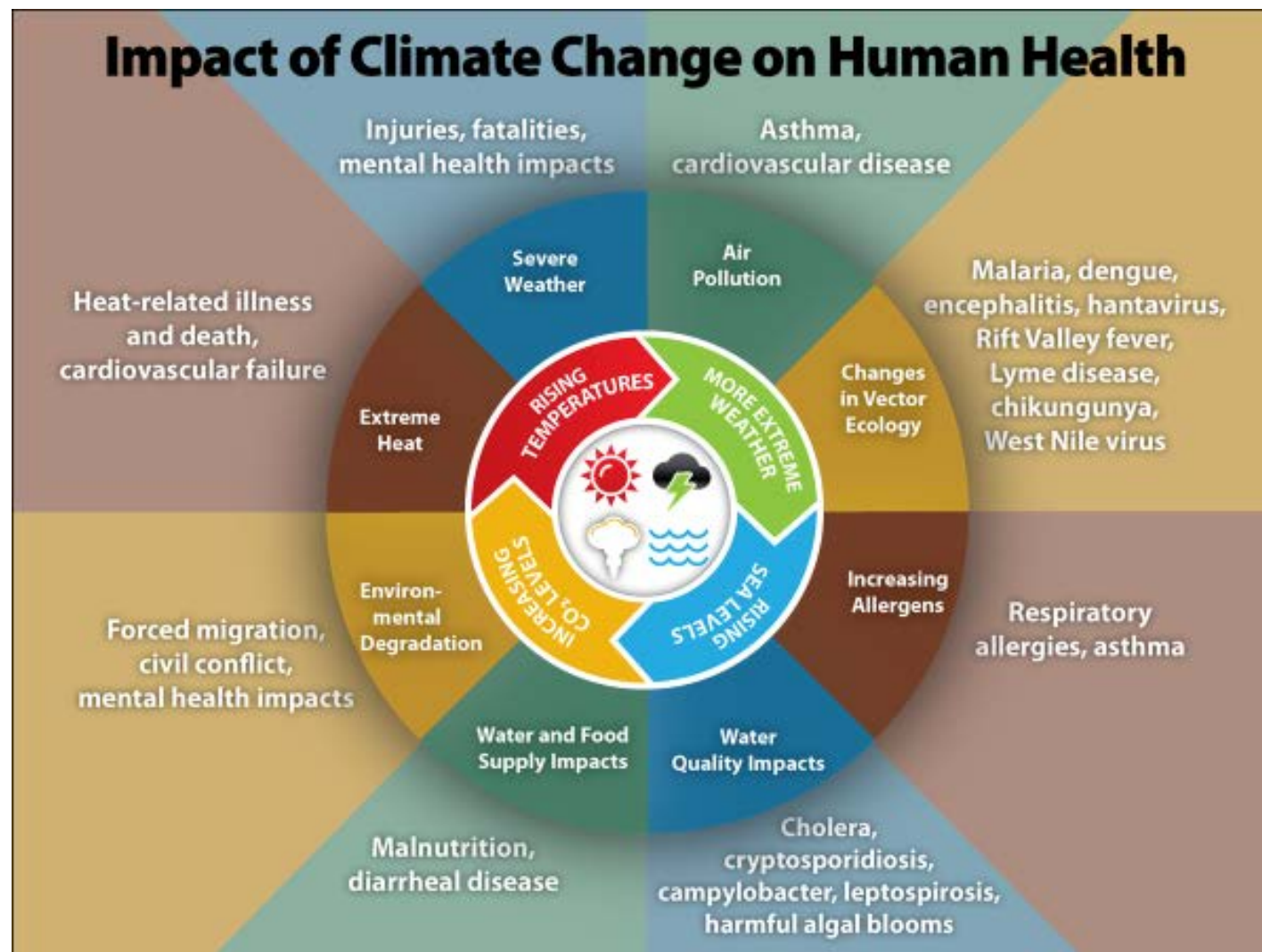
Director of Environmental & Social Sustainability

CONFIDENTIAL

CLIMATE CHANGE & HEALTH

Our health is impacted by our environment

Climate change will affect public health

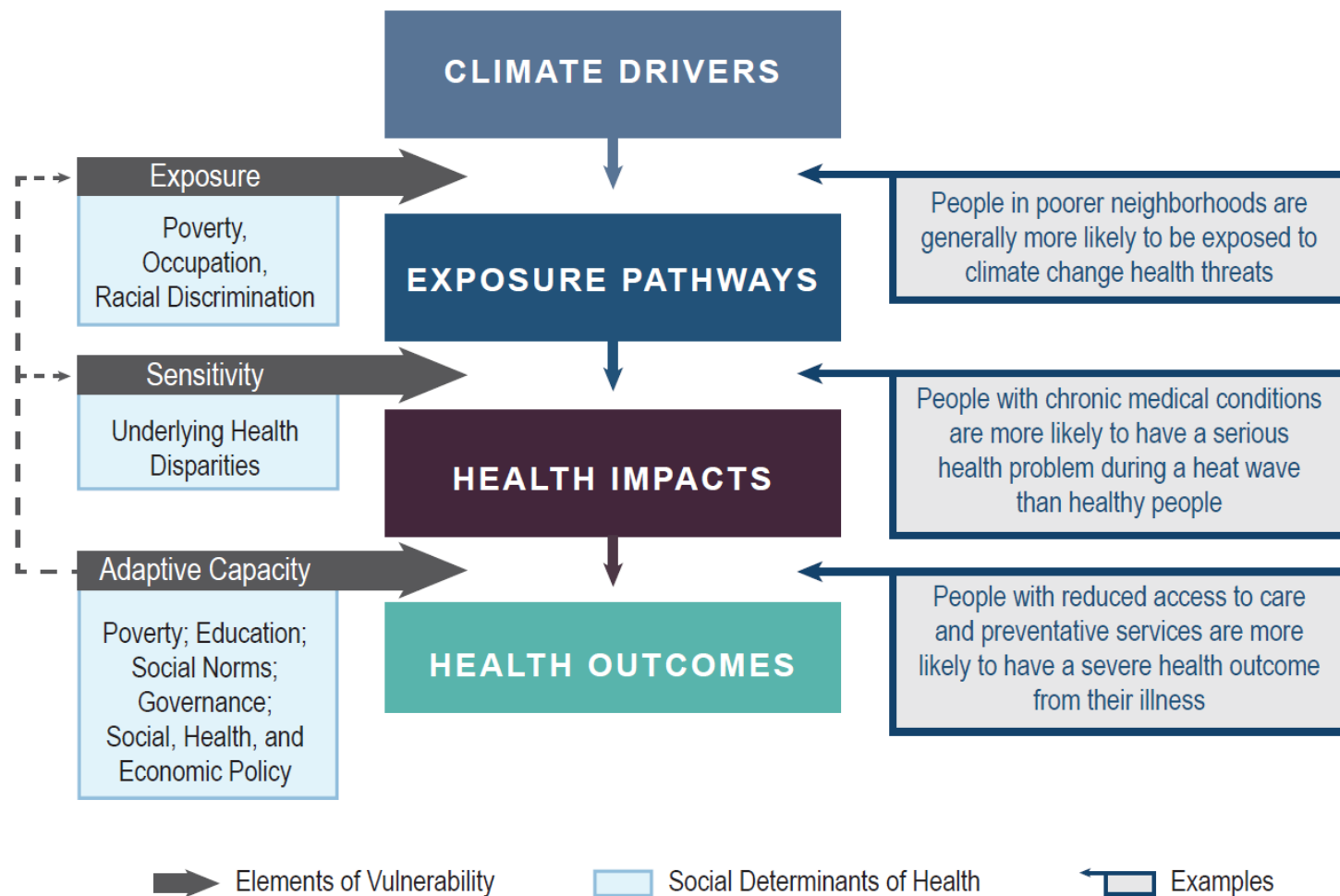


<https://www.cdc.gov/climateandhealth/effects/default.htm>

CLIMATE CHANGE & HEALTH INEQUITIES

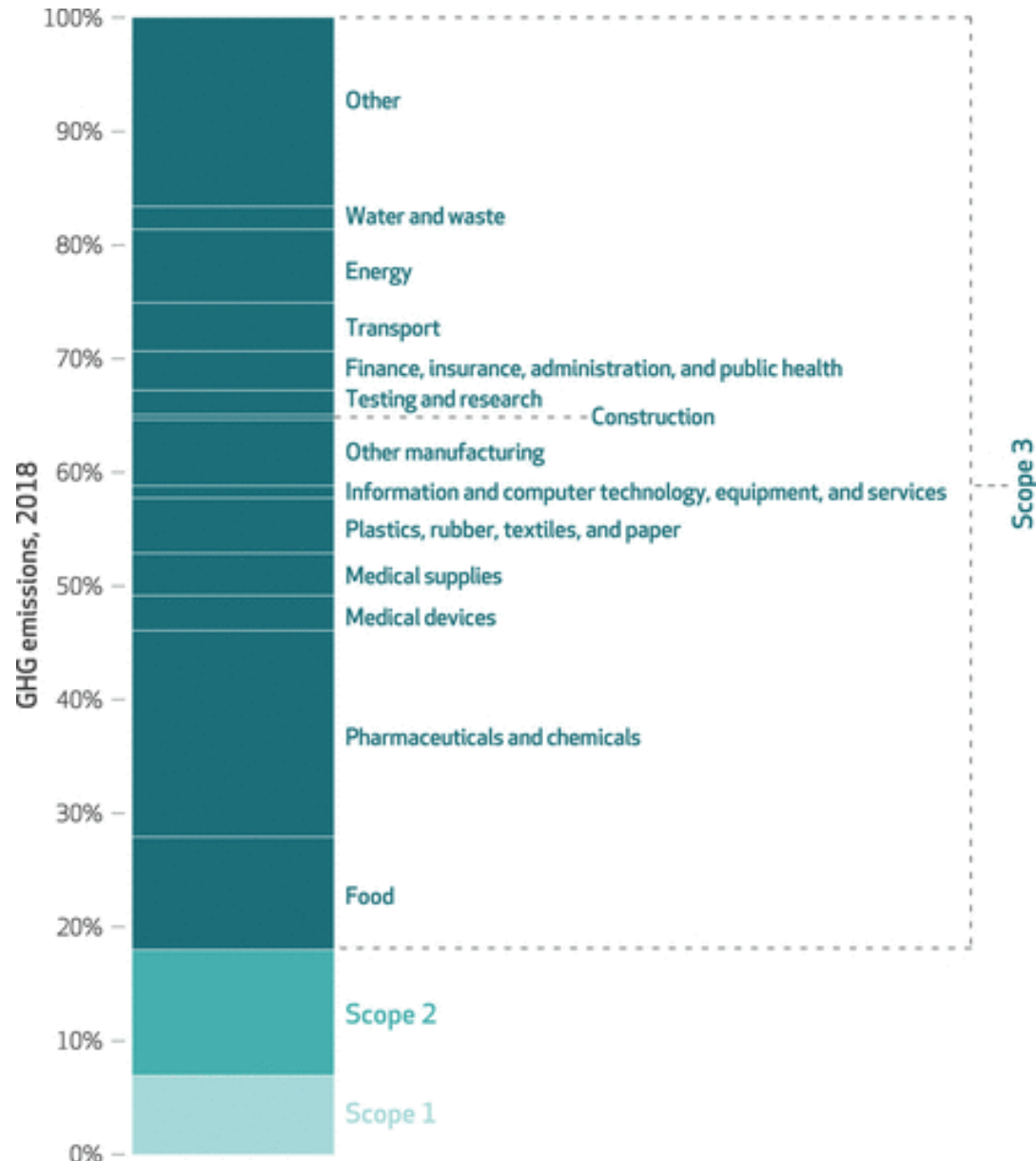
Intersection of Social Determinants of Health and Vulnerability

Environmental health inequities put our most vulnerable patients at greatest risk



<http://dx.doi.org/10.7930/J0R49NOX>

US National Health Care Greenhouse Gas (GHG) Emissions by Scope



HEALTH CARE'S CONTRIBUTIONS

- Health Care responsible for ~4.6% of worldwide Greenhouse Gas (GHG) emissions
- US Health Care responsible for 1/4 of all global health care GHGs
- Emissions and health care pollution responsible for health damages & loss of life
- Health care contributes to the problem- but we can be a **part of the solution**

[Health Care Pollution And Public Health Damage In The United States: An Update](#)

Sustainability Benchmark Reports- Practice Greenhealth



HEALTH CARE SUSTAINABILITY METRICS



Chemicals of Concern

- Green cleaning chemicals
- DEHP & PVC- free product lines



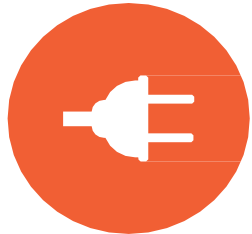
Sustainable Procurement

- Green spend



Greening the OR

- Reprocessed devices
- ORs with HVAC setback
- Greenhouse gas emissions from anesthetics



Lower Energy

- Energy use intensity (EUI)
- ENERGY STAR score



Food

- Meat reduction
- Sustainably produced food
- Locally procured food



Water

- Water use intensity
- Reduction in water use



CO2 Emissions

- Renewable energy
- Change in Scope 1 & Scope 2 emissions



Transportation

- Reduction in owned vehicle emissions
- Alternate fuel fleet vehicles



Less Waste

- Recycling
- Regulated Medical Waste
- Total waste / pt day

PROCESS

- Met with U of U Health Green Team
 - 20+ teams represented
- Green Team members complete the Practice Greenhealth 'Partner for Change 2021' Award Application
- Specific conversations relevant to energy, food, anesthesia, patient support services

HEALTH CARE SUSTAINABILITY + U OF U DEPARTMENTS



Chemicals of Concern

- Purchasing
- Aesthetics & Standards*
- Environmental Services



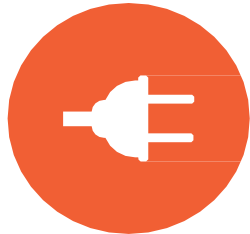
Sustainable Procurement

- Purchasing & Contracting
- Pharmacy
- Patient Support Services
- Nutrition Care Services



Greening the OR

- Perioperative Services
- Pharmacy
- Purchasing & Contracting
- Patient Support Services
- Facilities & Engineering*



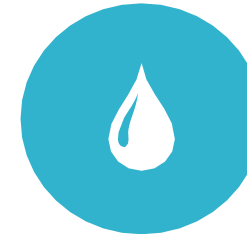
Lower Energy

- Facilities & Engineering*
- Design & Construction*



Food

- Nutrition Care Services
- Purchasing & Contracting
- Environmental Services



Water

- Facilities & Engineering*
- Design & Construction*



CO2 Emissions

- Facilities & Engineering*
- Perioperative Services
- Nutrition Care Services
- Fleet Services
- Patient Support Services



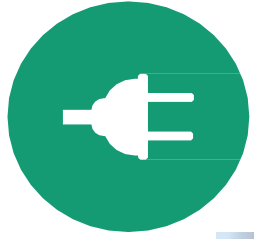
Transportation

- Fleet Services
- Patient Support Services
- Design & Construction*
- Purchasing & Contracting
- HR



Less Waste

- Patient Support Services
- Perioperative Services
- Pharmacy
- Purchasing & Contracting
- Environmental Services



SPOTLIGHT: ENERGY



- 54% of U of U energy provided by renewables
- Energy Star Score of 90 → 97th percentile for academic health centers
- Many ongoing energy efficiency projects



SPOTLIGHT: FOOD

- Food waste reduction through Lean Path and donation to FeedU Pantry
- 7% spend on sustainable, 21% on local procurement → 79th percentile for academic health centers





SPOTLIGHT: GREENING THE OR



- 100% of OR Kits Reviewed
- 9/32 reusable products vs. disposables
- .03 MTCO₂e for inhaled anesthetics per OR procedure → 80th percentile for academic health centers

OPPORTUNITIES TO LEARN MORE & IMPROVE



- For 2022 Practice Green Health Award, Need to Collect Data:
 - Waste
 - Green cleaning
 - Transportation
 - Procurement

NEXT STEPS

- Internal Analysis- starting with Practice Greenhealth Gap Analysis
- Stakeholder engagement & listening tour
- Identify, execute & evaluate projects
- Submit 2022 Practice Greenhealth Application

Thank you!

Questions?



REFERENCES

- Centers for Disease Control and Prevention. (2021, March 2). *Climate effects on health*. Centers for Disease Control and Prevention. Retrieved November 30, 2021, from <https://www.cdc.gov/climateandhealth/effects/default.htm>.
- Climate Change, Health, and Equity: Opportunities for Action. 2015. Public Health Institute, Oakland, CA.
- Eckelman, M. J., Huang, K., Lagasse, R., Senay, E., Dubrow, R., & Sherman, J. D. (2020). Health Care Pollution and public health damage in the United States: An update. *Health Affairs*, 39(12), 2071–2079. <https://doi.org/10.1377/hlthaff.2020.01247>
- Rudolph L, Gould S, Berko J. Climate Change, Health, and Equity: Opportunities for Action. 2015. Public Health Institute, Oakland, CA.
- USGCRP, 2016: The Impacts of Climate Change on Human Health in the United States: A Scientific Assessment. Crimmins, A., J. Balbus, J.L. Gamble, C.B. Beard, J.E. Bell, D. Dodgen, R.J. Eisen, N. Fann, M.D. Hawkins, S.C. Herring, L. Jantarasami, D.M. Mills, S. Saha, M.C. Sarofim, J. Trtanj, and L. Ziska, Eds. U.S. Global Change Research Program, Washington, DC, 312 pp. <http://dx.doi.org/10.7930/J0R49NOX>