



Pursuing Green Health- Assessing Sustainability of Hospital Operations



Smitha Warriar, MD FASA
Chief Surgical Operations Officer
Medical Director Environmental & Social Sustainability

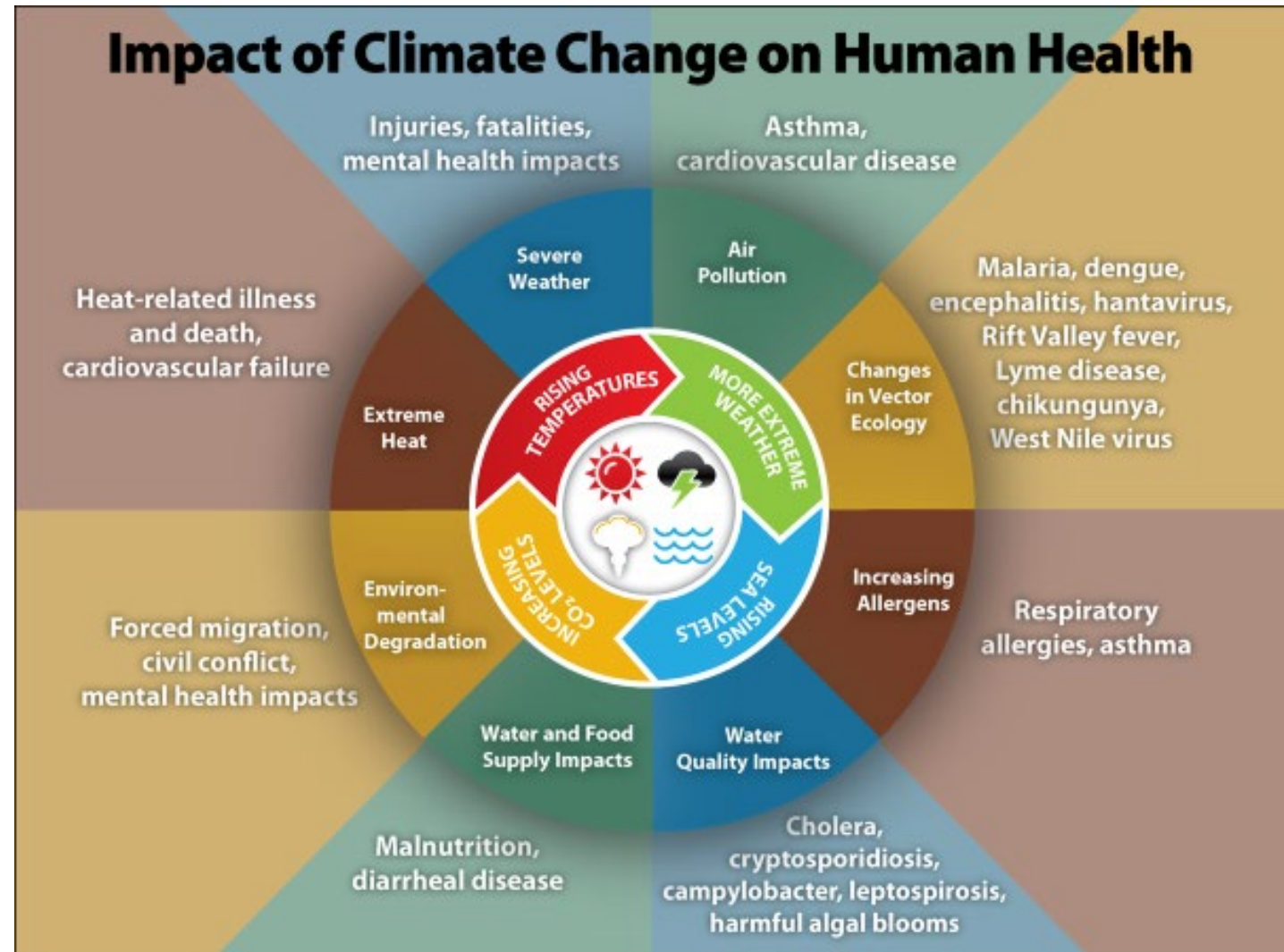
Alexis Lee, MBA
Director of Environmental & Social Sustainability

THE ENVIRONMENT & HEALTH

Our health is impacted by our environment.

Climate change is already affecting public health.

The health impacts are not felt equally.



<https://www.cdc.gov/climateandhealth/effects/default.htm>

HEALTH CARE'S CONTRIBUTIONS



- Health Care responsible for ~5% of worldwide Greenhouse Gas (GHG) emissions
- U of U Health ~ 30% of campus emissions
- Health care contributes to the problem- but we can be a **part of the solution!!!**

[Health Care Pollution And Public Health Damage In The United States: An Update](#)

SUSTAINABILITY PRIORITIES

- Providing compassionate and **environmentally sound care**
- Preparing to **be resilient** in the face of climate-related changes and event
- **Education and research** on sustainable health care

SUSTAINABILITY 2023 DIRECTED STEPS



ONE U

Participate in One U Sustainability efforts by ensuring that U of U Health patient and employee perspectives are included in the University of Utah Climate Change Action Plan.



SERVE
COMMUNITIES
& THE REGION

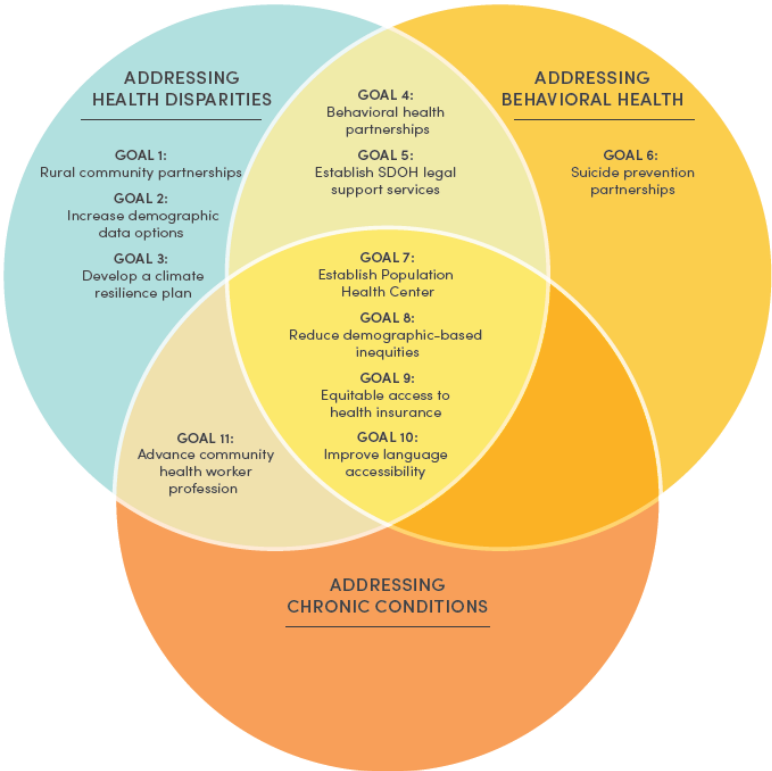
Foster a culture of sustainability at U Health, including a deeper understanding of climate change impacts on patient health.

COMMUNITY HEALTH NEEDS ASSESSMENT GOAL

Addressing Health Disparities
Goals that focus on addressing health outcomes that are avoidable, unfair, and unjust.

Addressing Chronic Diseases
Goals that focus on cancer, diabetes, and obesity-related chronic conditions.

Addressing Behavioral Health
Goals that focus on mental health, suicide, and substance use disorders.



Develop and release a climate resilience plan for continuous operations by the end of 2023, anticipating the needs of groups in our community that experience disproportionate risk of climate-related harm.

Sustainability Benchmark Reports- Practice Greenhealth



2019 Sustainability
Benchmark Data



© Practice Greenhealth 2019
May not be reproduced in whole or in part without the
express written permission of Practice Greenhealth.



2020 Sustainability
Benchmark Data



© Practice Greenhealth 2020
May not be reproduced in whole or in part without the
express written permission of Practice Greenhealth.

PracticeGreenhealth.org



Pandemic perspective:
Insights on health care sustainability in 2020



HEALTH CARE SUSTAINABILITY METRICS



Chemicals of Concern

- Green cleaning chemicals
- DEHP & PVC- free product lines



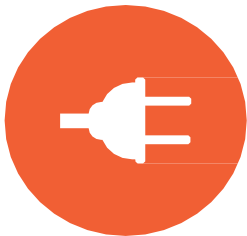
Sustainable Procurement

- Green spend



Greening the OR

- Reprocessed devices
- ORs with HVAC setback
- Greenhouse gas emissions from anesthetics



Lower Energy

- Energy use intensity (EUI)
- ENERGY STAR score



Food

- Meat reduction
- Sustainably produced food
- Locally procured food



Water

- Water use intensity
- Reduction in water use



CO2 Emissions

- Renewable energy
- Change in Scope 1 & Scope 2 emissions



Transportation

- Reduction in owned vehicle emissions
- Alternate fuel fleet vehicles



Less Waste

- Recycling
- Regulated Medical Waste
- Total waste / pt day

PROCESS

- Met with U of U Health Green Team
 - 20+ teams represented
- Green Team members complete the Practice Greenhealth 'Partner for Change 2022' Award Application
- Specific conversations relevant to energy, food, anesthesia, patient support services

HEALTH CARE SUSTAINABILITY + U OF U DEPARTMENTS



Chemicals of Concern

- Purchasing
- Aesthetics & Standards
- Environmental Services



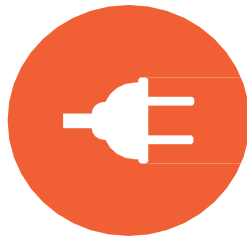
Sustainable Procurement

- Purchasing & Contracting
- Pharmacy
- Patient Support Services
- Nutrition Care Services



Greening the OR

- Perioperative Services
- Pharmacy
- Purchasing & Contracting
- Patient Support Services
- Facilities & Engineering



Lower Energy

- Facilities & Engineering
- Design & Construction



Food

- Nutrition Care Services
- Purchasing & Contracting
- Environmental Services



Water

- Facilities & Engineering
- Design & Construction



CO2 Emissions

- Facilities & Engineering
- Perioperative Services
- Nutrition Care Services
- Fleet Services
- Patient Support Services



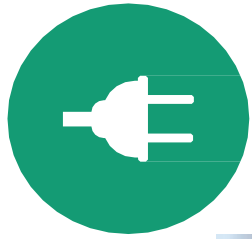
Transportation

- Fleet Services
- Patient Support Services
- Design & Construction
- Purchasing & Contracting
- HR



Less Waste

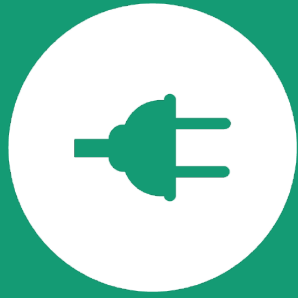
- Patient Support Services
- Perioperative Services
- Pharmacy
- Purchasing & Contracting
- Environmental Services



SPOTLIGHT: ENERGY



- U of U gets significant energy from renewables → 86th percentile for academic health centers
- Energy Use Intensity is going down!
- Many ongoing energy efficiency projects



Energy metrics



Energy use intensity
(EUI)

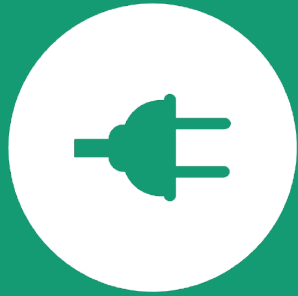


% Change in EUI from
baseline

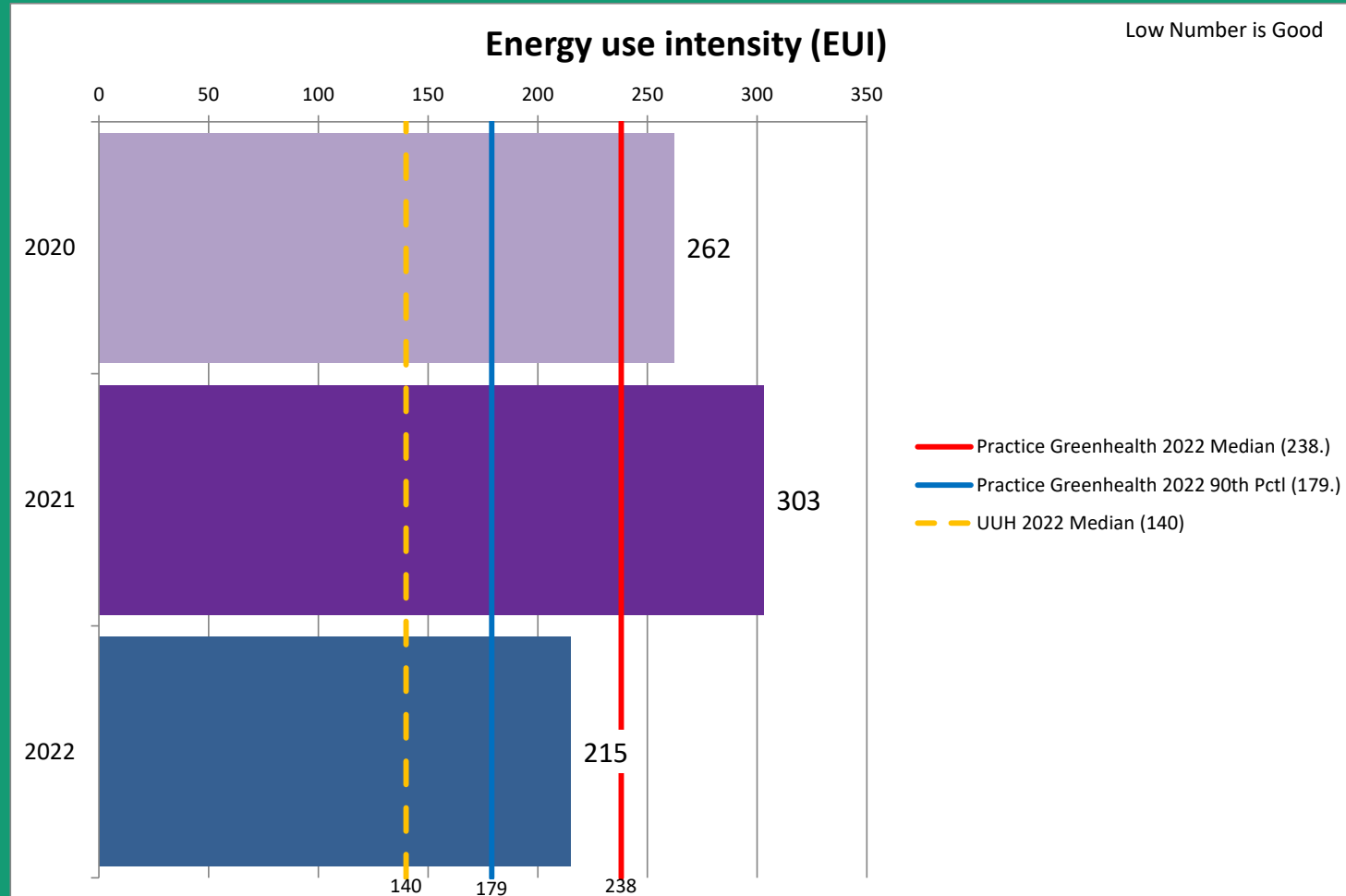


Energy Star score





Energy metrics





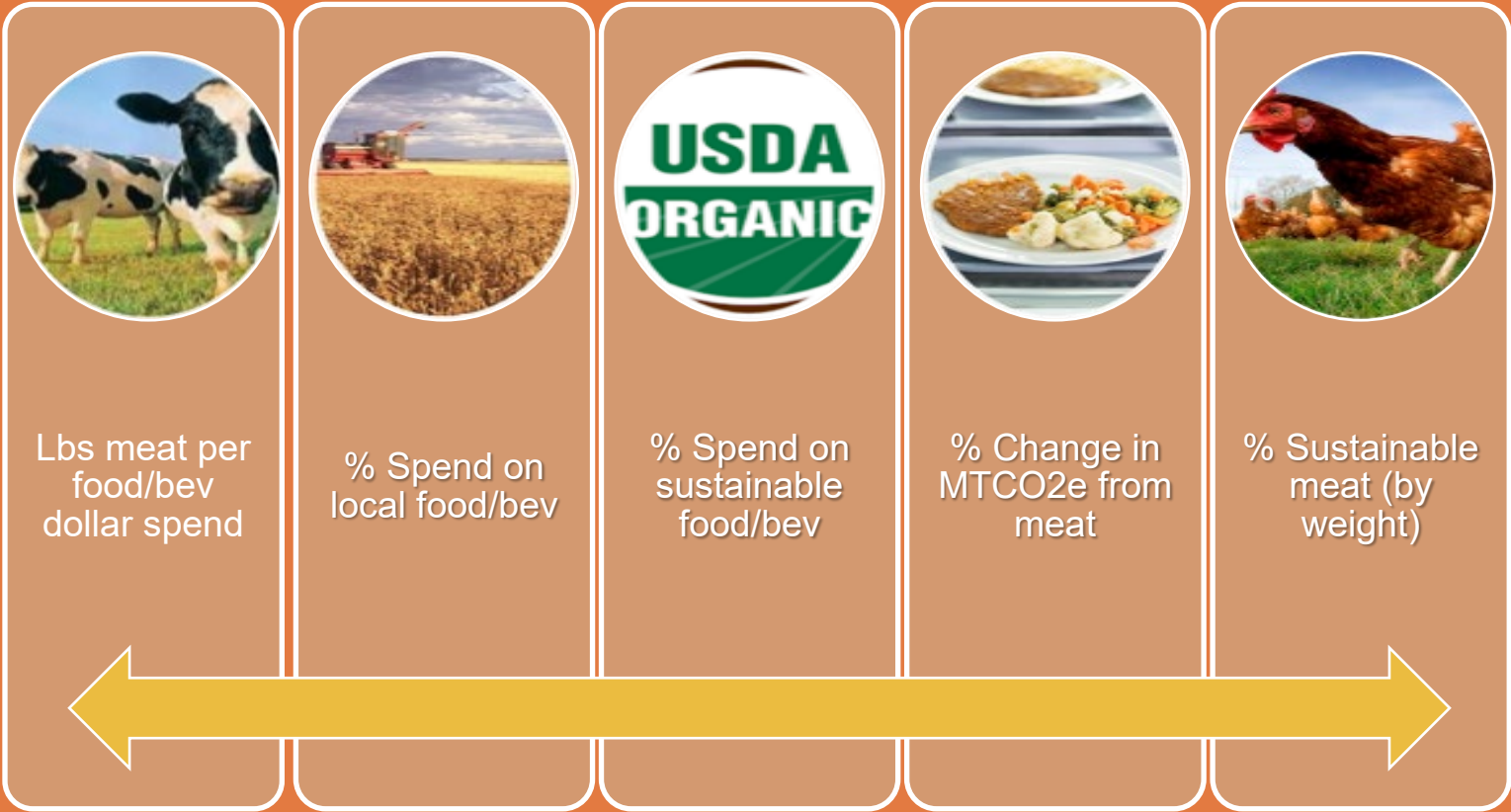
SPOTLIGHT: FOOD

- Food waste reduction through Lean Path, donation to FeedU Pantry, anaerobic digester, food rescue
- 9.7% spend on sustainable food, up from 7.3% in 2020 – getting toward 20% goal!



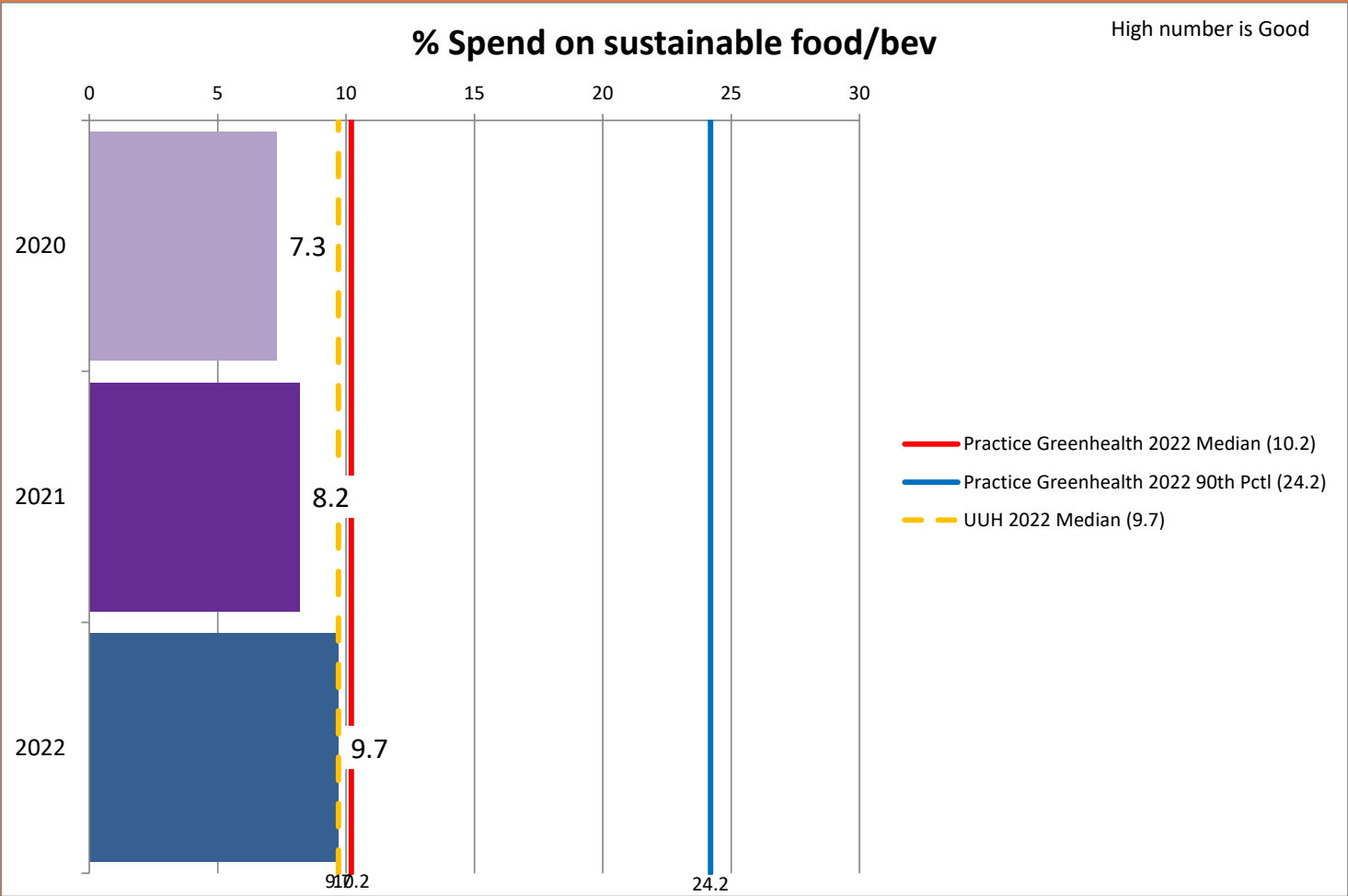


Food metrics





Food metrics





SPOTLIGHT: GREENING THE OR



- Hired Sustainability Product Portfolio Administrator!
- 10/34 reusable products vs. disposables
- Reducing CO₂ equivalent from inhaled anesthetics
 - Stickers on anesthesia machines
 - Investigating nitrous oxide use

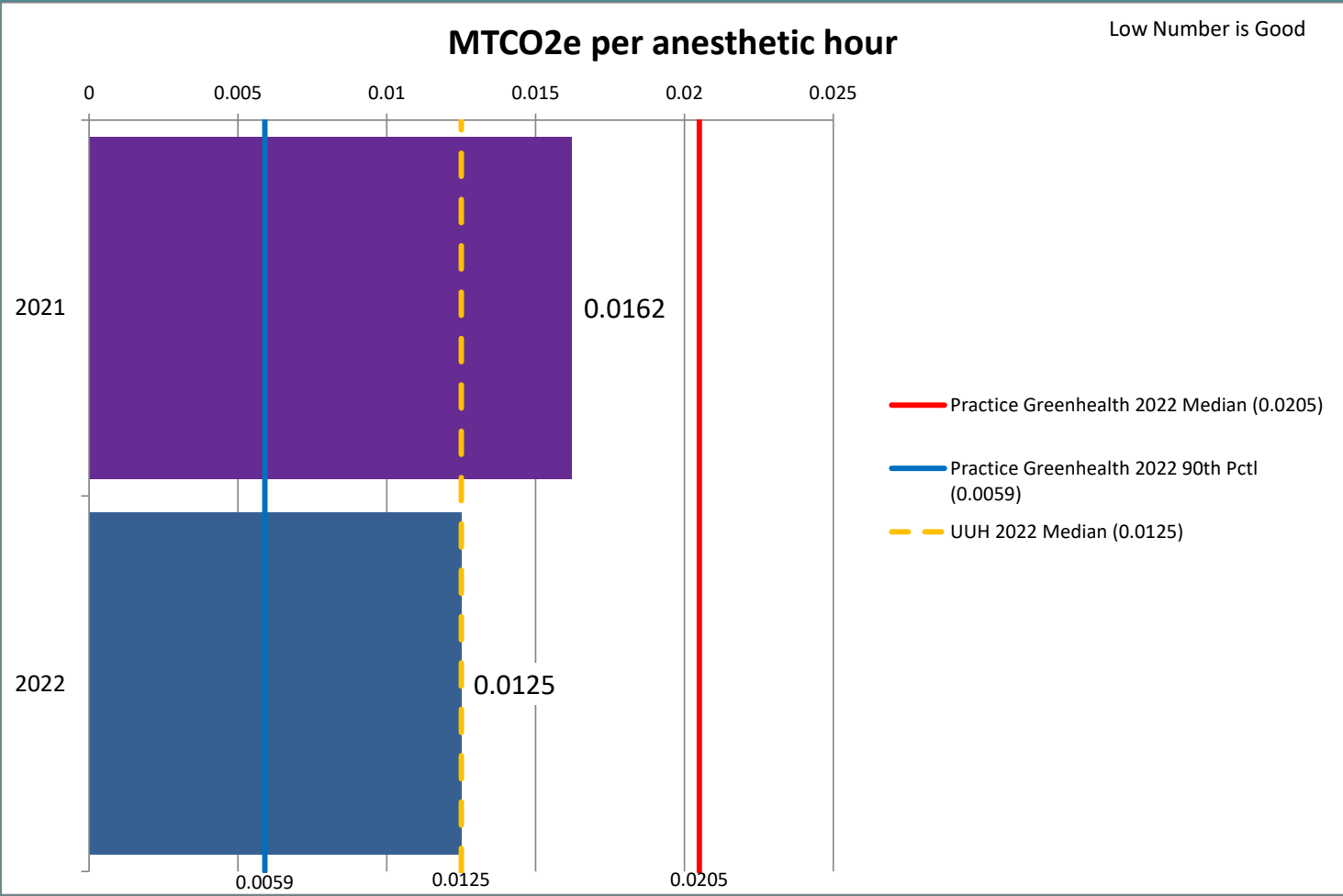


Greening the OR metrics





Greening the OR metrics



OPPORTUNITIES ON THE HORIZON



- HVAC Optimization
- Tracking Chemicals of Concern
- Waste RFP
- Room Service Model
- Nitrous Oxide Tracking
- Dashboard!

Thank you!
Questions?

